



MATERIALS

Bernat® Blanket Brights™ (10.5 oz/300 g; 220 yds/201 m)
Contrast A Race Car Red (12001) **2 balls or 381 yds/348 m**
Contrast B School Bus Yellow (12003) **2 balls or 381 yds/348 m**
Contrast C Royal Blue (12006) **2 balls or 381 yds/348 m**

Size U.S. M/13 (9 mm) crochet hook **or size needed to obtain gauge.**

ABBREVIATIONS:

Approx =	Approximate(ly)	Pat = Pattern
Ch = Chain(s)	Yoh and draw through 2 loops on hook) 3 times. Yoh and draw through all loops on hook	Rep = Repeat
Cont = Continue(ing)		RS = Right side
D3tog = (Yoh and draw up a loop in	Dc = Double crochet	St(s) = Stitch(es)
		Yoh = Yarn over hook

 CROCHET | SKILL LEVEL: EASY

MEASUREMENTS

Approx 46 x 46" [117 x 147.5 cm].

GAUGE:

6 dc and 3 rows = 4" [10 cm].

INSTRUCTIONS

Stripe Pat

With A, work 20 rows.

With B, work 20 rows.

With C, work 20 rows.

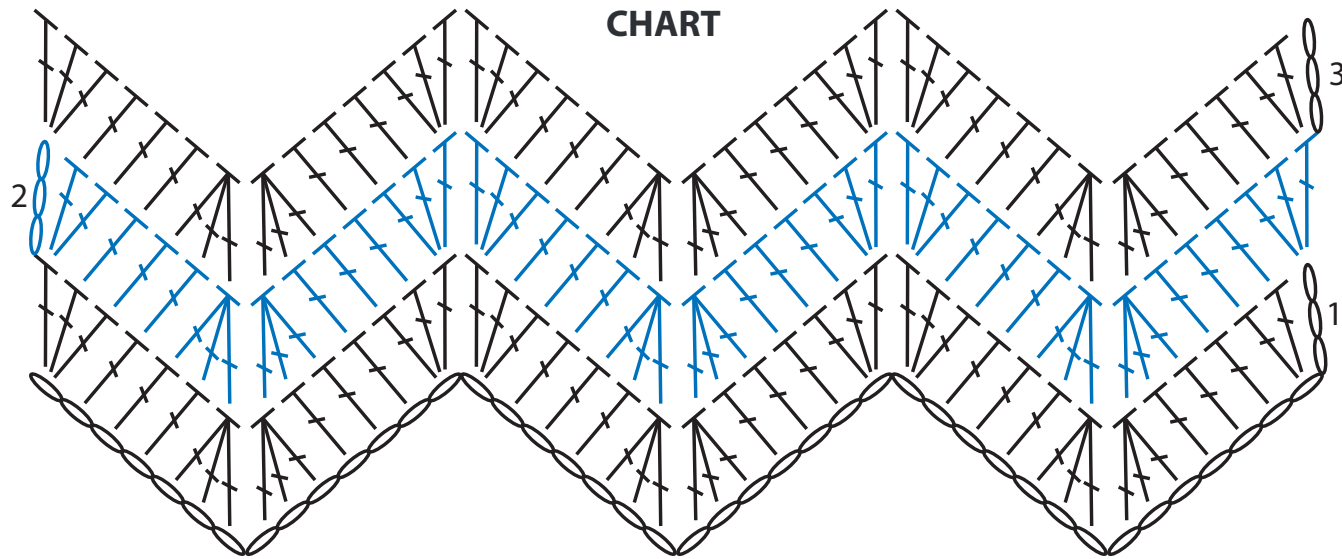
These 60 rows form Stripe Pat.

To change colors, work to last 2 loops on hook of previous strand draw new color through.

With A, ch 101.

1st row: (RS). 2 dc in 4th ch from hook (counts as 3 dc). 1 dc in each of next 3 ch. (Dc3tog) twice. 1 dc in each of next 3 ch. *3 dc in each of next 2 ch. 1 dc in each of next 3 ch. (Dc3tog) twice. 1 dc in each of next 3 ch. Rep from * to last ch. 3 dc in last ch. Turn.

2nd row: Ch 3 (counts as dc). 2 dc in first dc. 1 dc in each of next 3 dc. (Dc3tog) twice. 1 dc in each of next 3 dc. *3 dc in each of next 2 dc. 1 dc in each of next 3 dc. (Dc3tog) twice. 1 dc in each of next 3 dc. Rep from * to last dc. 3 dc in last dc. Turn.
 Rep 2nd row for pat. First 2 rows of Stripe Pat are complete.
 Cont in Stripe Pat until 60 rows of Stripe Pat have been worked.
 Fasten off.



KEY

○ = chain (ch)

┆ = double crochet (dc)

┆ or ┆ = double crochet 3 together (Dc3tog)