

BERNAT® ARGYLE TEXTURE KNIT BLANKET



KNIT | SKILL LEVEL: INTERMEDIATE

ABBREVIATIONS

Approx = Approximately

Beg = Beginning

Cont = Continue(ity)

K = Knit

P = Purl

Pat = Pattern

Rep = Repeat

RS = Right side

St(s) = Stitch(es)

Tw2L = Knit into back of 2nd stitch on needle, then knit into back of first stitch and slip both stitches off needle together.

Tw2R = Knit into front of 2nd stitch on needle, then knit into front of first stitch and slip both stitches off needle together.

MEASUREMENTS

Approx 54" x 60" [137 x 152.5 cm].

GAUGE

10.5 sts and 14 rows = 4" [10 cm] in pat.

INSTRUCTIONS

Cast on 138 sts (multiple of 14 sts + 12). **Do not** join. Working back and forth across needle in rows, proceed as follows:

Top Edging: 1st row: (RS). K2. *P2. K2. Rep from * to end of row.

2nd row: P2. *K2. P2. Rep from * to end of row.

3rd to 8th rows: Rep last 2 rows 3 times more.

Proceed in pat as follows:

1st row: (RS). K6. *Tw2L. K4. P2. K4. Tw2R. Rep from * to last 6 sts. K6.

2nd row: P6. *P6. K2. P6. Rep from * to last 6 sts. P6.

3rd row: P6. *K1. Tw2L. K2. P4. K2. Tw2R. K1. Rep from * to last 6 sts. P6.

4th row: K6. *P5. K4. P5. Rep from * to last 6 sts. K6.

5th row: K6. *K2. Tw2L. P6. Tw2R. K2. Rep from * to last 6 sts. K6.

6th row: P6. *P4. K6. P4. Rep from * to last 6 sts. P6.

7th row: P6. *K3. Tw2L. P4. Tw2R. K3. Rep from * to last 6 sts. P6.



MATERIALS

Bernat® Softee® Chunky™ Tweeds™ (10.5 oz/300 g; 316 yds/289 m)
Soft Gray Tweed (11004) **5 balls or 1444 yds/1321 m**

Size U.S. 11 (8 mm) circular knitting needle 36" [91.5 cm] long **or size needed to obtain gauge.**

BERNAT® ARGYLE TEXTURE KNIT BLANKET

8th row: K6. *P3. K1. P1. K4. P1. K1. P3. Rep from * to last 6 sts. K6.

9th row: K6. *K2. P2. Tw2L. P2. Tw2R. P2. K2. Rep from * to last 6 sts. K6.

10th row: P6. *P2. K3. P1. K2. P1. K3. P2. Rep from * to last 6 sts. P6.

11th row: P6. *K1. P4. Tw2L. Tw2R. P4. K1. Rep from * to last 6 sts. P6.

12th row: K6. *P1. K5. P1. K6. P1. Rep from * to last 6 sts. K6.

13th row: K6. *P6. Tw2R. P6. Rep from * to last 6 sts. K6.

14th row: P6. *P1. K5. P2. K5. P1. Rep from * to last 6 sts. P6.

15th row: P6. *K1. P4. Tw2R. Tw2L. P4. K1. Rep from * to last 6 sts. P6.

16th row: K6. *P2. K3. P1. K2. P1. K3. P2. Rep from * to last 6 sts. K6.

17th row: K6. *K2. P2. Tw2R. P2. Tw2L. P2. K2. Rep from * to last 6 sts. K6.

18th row: P6. *P3. K1. P1. K4. P1. K1. P3. Rep from * to last 6 sts. P6.

19th row: P6. *K3. Tw2R. P4. Tw2L. K3. Rep from * to last 6 sts. P6.

20th row: K6. *P4. K6. P4. Rep from * to last 6 sts. K6.

21st row: K6. *K2. Tw2R. P6. Tw2L. K2. Rep from * to last 6 sts. K6.

22nd row: P6. *P5. K4. P5. Rep

from * to last 6 sts. P6.

23rd row: P6. *K1. Tw2R. K2. P4. K2. Tw2L. K1. Rep from * to last 6 sts. P6.

24th row: K6. *P6. K2. P6. Rep from * to last 6 sts. K6.

25th row: K6. *Tw2R. K4. P2. K4. Tw2L. Rep from * to last 6 sts. K6.

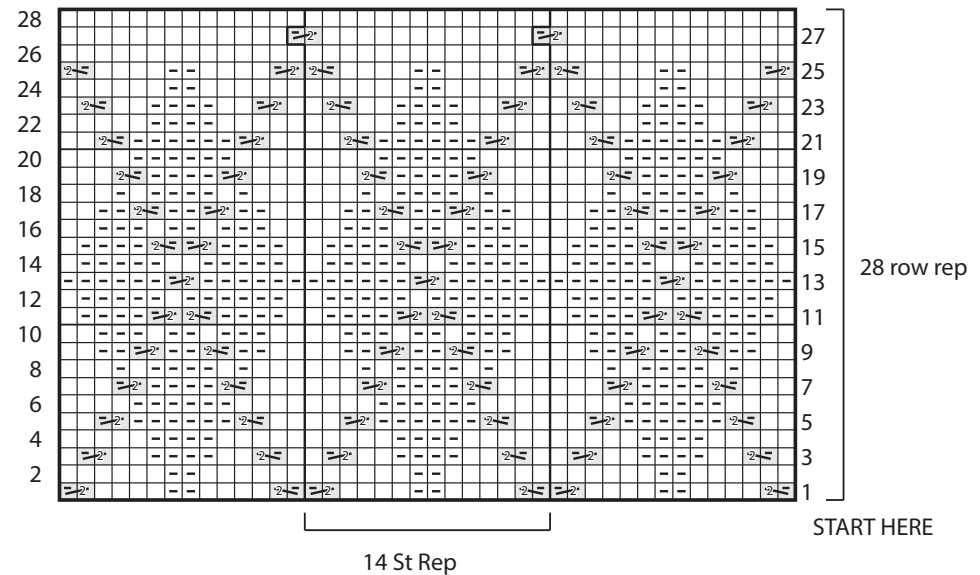
26th row: Purl.

27th row: P6. K13. Tw2R. *K12. Tw2R. Rep from * to last 19 sts. K13. P6.

28th row: K6. Purl to last 6 sts. K6. These 28 rows form Argyle Pat.

Cont in Argyle Pat until work from beg measures approx 58" [147.5 cm] ending with 26th row of pat.

Bottom Edging: Work 1st to 8th rows as given for Top Edging. Cast off in pat.



KEY

- K1 on RS rows. P1 on WS rows.
- P1 on RS rows. K1 on WS rows.
- Tw2R
- Tw2L