

# Yarnspirations

spark your inspiration!

**BERNAT** CABLE HAT | KNIT



 **KNIT | SKILL LEVEL: INTERMEDIATE**

**SIZE**

One size to fit average adult's head.

**GAUGE**

11 sts and 14 rows = 4" [10 cm] with larger needles in stocking st.

**MATERIALS**

**Bernat® Softee® Chunky™** (3.5 oz/100 g; 108 yds/99 m)  
**Woman's Version:** Rouge (28531) **2 balls**  
**Man's Version:** Clay (28041) **1 ball**

Set of four sizes U.S. 10½ (6.5 mm) and U.S. 11 (8 mm) double-pointed knitting needles **or size needed to obtain gauge.** Cable needle. Stitch marker.

**ABBREVIATIONS:**

**Beg** = Beginning  
**Cont** = Continue(ity)  
**Cr5B** = Slip next 3 stitches onto cable needle and leave at back of work. K2, then (P1. K2) from cable needle  
**K** = Knit  
**K1tbl** = Knit next stitch through back of loop  
**K2tog** = Knit next 2 stitches together

**M1** = Make 1 stitch by picking up horizontal loop lying before next stitch and knitting into back of loop



**P** = Purl  
**P2tog** = Purl next 2 stitches together  
**Pat** = Pattern  
**Rem** = Remaining

**Rep** = Repeat  
**Rnd(s)** = Round(s)  
**RS** = Right side  
**St(s)** = Stitch(es)  
**T3B** = Slip next stitch onto cable needle and leave at back of work. K2, then P1 from cable needle  
**T3F** = Slip next 2 stitches onto cable needle and leave at front of work. P1, then K2 from cable needle

**INSTRUCTIONS**

**CABLE PANEL** (worked over 13 sts). See chart on page 2.

- 1st row:** P4. Cr5B. P4.
  - 2nd row:** P4. K2. P1. K2. P4.
  - 3rd row:** P3. T3B. P1. T3F. P3.
  - 4th row:** P3. K2. P3. K2. P3.
  - 5th row:** P2. T3B. P3. T3F. P2.
  - 6th row:** P2. K2. P5. K2. P2.
  - 7th row:** P2. K2. P5. K2. P2.
  - 8th row:** As 6th row.
  - 9th row:** P2. T3F. P3. T3B. P2.
  - 10th row:** As 4th row.
  - 11th row:** P3. T3F. P1. T3B. P3.
  - 12th row:** As 2nd row.
- These 12 rows form Cable Panel.

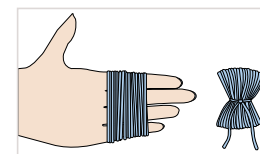
With smaller set of needles, cast on 58 sts. Divide sts on 3 needles and join in rnd, placing a marker on first st.  
**1st rnd:** \*K1. P1. Rep from \* around.  
 Rep last rnd (K1. P1) ribbing for 3" [7.5 cm].  
**Next rnd:** \*Rib 5. M1. Rib 4. M1. Rep from \* to last 4 sts. Rib 4. 70 sts.

Change to set of larger needles and proceed in pat as follows:  
**1st rnd:** (K1tbl. Work 1st row Cable Panel across next 13 sts) 5 times.  
**2nd rnd:** (K1tbl. Work 2nd row Cable Panel across next 13 sts) 5 times.  
 Cable Panel is now in position.  
 Work a further 10 rnds even in pat, ending on 12th row of Cable Panel.

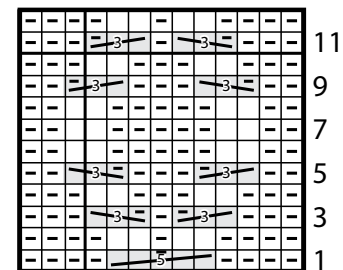
- Shape top: 1st rnd:** (K1tbl. P2tog. P2. Cr5B. P2. P2tog) 5 times. 60 sts.
- 2nd rnd:** (K1tbl. P3. K2. P1. K2. P3) 5 times.
- 3rd rnd:** (K1tbl. P2. T3B. P1. T3F. P2) 5 times.
- 4th rnd:** (K1tbl. P2. K2. P3. K2. P2) 5 times.
- 5th rnd:** (K1tbl. P1. T3B. P3tog. T3F. P1) 5 times. 50 sts.
- 6th rnd:** (K1tbl. P1. K2. P3. K2. P1) 5 times.

- 7th rnd:** (K1tbl. P1. K2. P3. K2. P1) 5 times.
- 8th rnd:** As 6th rnd.
- 9th rnd:** (K1tbl. P1. T3F. P1. T3B. P1) 5 times.
- 10th rnd:** (K1tbl. P2tog. K2. P1. K2. P2tog) 5 times. 40 sts.
- 11th rnd:** (K1tbl. P1. K2tog. P1. K2tog. P1) 5 times. 30 sts.
- 12th rnd:** (K1tbl. P1. K3tog. P1) 5 times. 20 sts. Break yarn leaving a long end. Draw end tightly through rem sts.

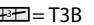
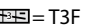
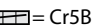
**Note:** One extra ball of yarn will be required for Pompom  
**Optional Pompom:** Wind yarn around 4 fingers 50 times. Tie tightly in the middle and leave a long end for attaching to Hat. Cut loops at both ends and trim to smooth round shape. Sew to top of Hat.



**CABLE CHART**



**Key** **Start Here**

☐ = Knit on RS rows. Purl on WS rows.  
 ▣ = Purl on RS rows. Knit on WS rows.  
 = T3B  
 = T3F  
 = Cr5B