



## Cable Hat, Mittens, Scarf and Socks

BERNAT® SUPER VALUE  
BERNAT® BERELLA 4  
BERNAT® SATIN

### SIZES

**Hat and Mittens:** To fit average lady.

**Scarf:** Approx 7½ x 60 ins  
[19 x 152.5 cm].

**Socks:** To fit lady's shoe size 5/6 (7/8-9/10)

### GAUGE

17 sts and 24 rows = 4 ins [10 cm] with  
larger needles in stocking st.

### MATERIALS

**Bernat® Super Value**  
(197 g/7 oz/389 m/426 yds)  
or **Bernat® Berella 4**  
(100 g/3.75 oz/197 m/216 yds)  
or **Bernat® Satin**  
(100 g/3.75 oz/149 m/163 yds)

**Hat:** 190 m/210 yds

**Mittens:** 190 m/210 yds

**Scarf:** 470 m/520 yds

**Socks**

5/6: 275 m/300 yds

7/8: 285 m/315 yds

9/10: 380 m/420 yds

**Hat and Mittens:** Sizes 5 mm (U.S. 8)  
and 5.5 mm (U.S. 9) knitting needles  
**or size needed to obtain gauge.** Cable  
needle.

**Scarf:** Size 5.5 mm (U.S. 9) knitting  
needles **or size needed to obtain  
gauge.** Cable needle.

**Socks:** Set of four size 5 mm (U.S. 8)  
double-pointed knitting needles **or size  
needed to obtain gauge.** Cable needle.

### ABBREVIATIONS

**Alt** = Alternate.

**Approx** = Approximately.

**Beg** = Beginning.

**Cont** = Continue(ity).

**C4B** = Slip next 2 stitches onto a cable  
needle and leave at back of work. K2, then  
K2 from cable needle.

**C4F** = Slip next 2 stitches onto a cable  
needle and leave at front of work. K2, then  
K2 from cable needle.

**Cont** = Continue(ity).

**Dec** = Decrease.

**Inc** = Increase 1 stitch by knitting into  
front and back of next stitch.

**K** = Knit.

**K2tog** = Knit next 2 stitches together.

**M1** = Make 1 stitch by picking up  
horizontal loop lying before next stitch  
and knitting into back of loop.



**P** = Purl.

**P2tog** = Purl next 2 stitches together.

**P2togtbl** = Purl 2 stitches together  
through back loops.

**Pat** = Pattern.

**Pss0** = Pass slipped stitch over.

**Rem** = Remaining.

**Rep** = Repeat.

**Rnd(s)** = Round(s).

**RS** = Right side.

**Sl1** = Slip next stitch knitwise.

**Sl1P** = Slip next stitch purlwise.

**St(s)** = Stitch(es).

**T4L** = Slip next 2 stitches onto a cable  
needle and leave at front of work. P2, then  
K2 from cable needle.

**T4R** = Slip next 2 stitches onto a cable  
needle and leave at back of work. K2, then  
P2 from cable needle.

**Tog** = Together.

**WS** = Wrong side.

### INSTRUCTIONS

*The instructions are written for smallest size.  
If changes are necessary for larger sizes the  
instructions will be written thus ( ). When  
only one number is given, it applies to all  
sizes. For ease in working, circle all numbers  
pertaining to your size.*

**Panel Pat A** (worked over 12 sts) (see  
chart).

**1st row:** (RS). K2. P2. K4. P2. K2.

**2nd and alt rows:** Knit all knit sts and  
purl all purl sts as they appear.

**3rd row:** K2. P2. C4B. P2. K2.

**5th row:** As 1st row.

**7th row:** T4L. C4B. T4R.

**9th row:** P2. T4R. T4L. P2.

**11th row:** T4R. P4. T4L.

**13th row:** K2. P8. K2.

**15th row:** T4L. P4. T4R.

**17th row:** P2. C4F. C4B. P2.

**19th row:** T4R. C4B. T4L.

**20th row:** As 2nd row.

These 20 rows form Panel Pat A.

**Panel Pat B** (worked over 8 sts) (see  
chart).

**1st row:** (RS). (K1. P1) 4 times.

**2nd to 6th rows:** As 1st row.

**7th row:** Slip 4 sts onto cable needle  
and leave at back of work. (K1. P1)  
twice. (K1. P1) twice from cable needle.

**8th row:** As 1st row.

These 8 rows form Panel Pat B.

## Hat

With smaller needles, cast on 89 sts.

**1st row:** (RS). K1. \*P1. K1. Rep from \* to end of row.

**2nd row:** P1. \*K1. P1. Rep from \* to end of row.

**3rd row:** As 1st row.

**4th row:** (Rib 4 sts. M1. Rib 2 sts. M1. Rib 9 sts. M1. Rib 2 sts. M1. Rib 5 sts) 4 times. Rib 1 st. 105 sts.

Change to larger needles and proceed as follows:

**1st row:** (RS). P1. (Work 1st row of Panel Pat A. P5. K4. P5) 4 times.

**2nd row:** (K5. P4. K5. Work 2nd row of Panel Pat A) 4 times. K1.

**3rd row:** P1. (Work 3rd row of Panel Pat A. P5. C4B. P5) 4 times.

**4th row:** (K5. P4. K5. Work 4th row of Panel Pat A) 4 times. K1.

Last 4 rows form 4-st Cable. Panel Pat A is now in position.

Cont in pat until work from beg measures approx 5 ins [12.5 cm], ending with a 10th row of Panel Pat A.

**Shape top: 1st row:** (RS). P1. (Work 11th row of Panel Pat A. P2tog. P3. C4B. P3. P2tog) 4 times. 97 sts.

**2nd and alt rows:** Knit all knit sts and purl all purl sts as they appear.

**3rd row:** P1. (Work 13th row of Panel Pat A. P2tog. P2. K4. P2. P2tog) 4 times. 89 sts.

**5th row:** P1. (Work 15th row of Panel Pat A. P2tog. P1. C4B. P1. P2tog) 4 times. 81 sts.

**7th row:** P1. (P2tog. T4L. T4R. P2tog. P2. K4. P2) 4 times. 73 sts.

**9th row:** P1. (P2tog. K7. P1. P2tog. C4B. P2) 4 times. 65 sts.

**11th row:** P1. P2tog. C4B (P1. P2tog. P1. K4. P1 P2tog. P1. C4B) 3 times. P1 P2tog. P1. K4. P2tog. 56 sts.

**13th row:** P2tog. (K2. K2tog. P1. P2tog) 7 times. K2. K2tog. P1. 40 sts.

**15th row:** (K2tog) 20 times. 20 sts. Break yarn, leaving a long end. Thread end through rem sts and draw up

tightly. Fasten securely. Sew back seam.

## Scarf

With larger needles, cast on 35 sts.

**\*\*1st row:** (WS). Sl1P. P1. Knit to last 2 sts. P2.

**2nd row:** Sl1. Knit to end of row.

Rep last 2 rows once more.\*\*

**1st row:** (WS). K6. [(Inc 1 st in next st. K1) 3 times. K3] 3 times. K2. 44 sts.

**2nd row:** Sl1. K3. P2. (Work 1st row of Panel Pat B. K2. P2) 3 times. K2.

**3rd row:** Sl1P. P1. (K2. P2. Work 2nd row of Panel Pat B) 3 times. K2. P4.

**4th row:** Sl1. K1. P2. K2. (Work 3rd row of Panel Pat B. P2. K2) 3 times. K2.

**5th row:** Sl1P. P3. K2. (Work 4th row of Panel Pat B. P2. K2) 3 times. P2.

These 2nd to 5th rows form Box St Pat. Panel Pat B is now in position.

Cont in pat until work from beg measures approx 59½ ins [151 cm], ending with 6th row of Panel Pat B.

**Next row:** (RS). Sl1. K4. [(K2tog. K1) 3 times. K3] 3 times. K3. 35 sts.

Work from \*\* to \*\* as given above. Cast off knitwise (WS).

## Mittens

### RIGHT MITTEN

\*\*With smaller needles, cast on 35 sts.

**1st row:** (RS). K1. \*P1. K1. Rep from \* to end of row.

**2nd row:** P1. \*K1. P1. Rep from \* to end of row.

Rep last 2 rows of (K1. P1) ribbing for 2 ins [5 cm], inc 1 st at center of last row and ending with a WS row. 36 sts.\*\*

Change to larger needles and proceed as follows:

**1st row:** (RS). K3. Work 1st row of Panel Pat A. Knit to end of row.

**2nd row:** P21. Work 2nd row of Panel Pat A. P3.

Panel Pat A is now in position.

Keeping cont of Panel Pat A, work even

for 4 rows more.

### Shape thumb gusset:

**1st row:** (RS). K3. Work appropriate row of Panel Pat A. K3. Inc 1 st in each of next 2 sts. Knit to end of row.

**2nd and alt rows:** Knit all knit sts and purl all purl sts as they appear.

**3rd row:** K3. Work appropriate row of Panel Pat A. K3. Inc 1 st in next st. K2. Inc 1 st in next st. Knit to end of row.

**5th row:** K3. Work appropriate row of Panel Pat A. K3. Inc 1 st in next st. K4. Inc 1 st in next st. Knit to end of row.

**7th row:** K3. Work appropriate row of Panel Pat A. K3. Inc 1 st in next st. K6. Inc 1 st in next st. Knit to end of row.

**9th row:** K3. Work appropriate row of Panel Pat A. K3. Inc 1 st in next st. K8. Inc 1 st in next st. Knit to end of row. 46 sts.

**11th row:** K3. Work appropriate row of Panel Pat A. K15. **Turn.** Leave rem sts on spare needle.

**\*\*\*Thumb: Next row:** P12. **Turn.**

Cont even on these 12 sts in stocking st for 12 rows.

**Next row:** (K2tog) 6 times.

Break yarn leaving a long end. Thread end through rem sts. Draw up and fasten securely. Sew Thumb seam.

With RS facing, pick up and knit 2 sts at base of thumb. Knit to end of row. 36 sts.

Keeping cont of Panel Pat A, cont even until work from beg measures 9 ins [23 cm], ending with a WS row.

**Shape top: 1st row:** (K1. Sl1. K1. pss. K12. K2tog. K1) twice.

**2nd row:** (P1. P2tog. P10. P2togtbl. P1) twice.

**3rd row:** (K1. Sl1. K1. pss. K8. K2tog. K1) twice.

**4th row:** (P1. P2tog. P6. P2togtbl. P1) twice.

**5th row:** (K1. Sl1. K1. pss. K4. K2tog. K1) twice. 16 sts.

**6th row:** Purl.

Cast off knitwise. Sew top and side seam.\*\*\*

## LEFT MITTEN

Work from \*\* to \*\* as given for Right Mitten.

Change to larger needles and proceed as follows:

**1st row:** (RS). K21. Work 1st row of Panel Pat A. K3.

**2nd row:** P3. Work 2nd row of Panel Pat A. P21.

Panel Pat A is now in position.

Keeping cont of Panel Pat A, work even for 4 more rows.

**Shape thumb gusset: 1st row:** K16. Inc 1 st in each of next 2 sts. K3. Work appropriate row of Panel Pat A. K3.

**2nd and alt rows:** Knit all knit sts and purl all purl sts as they appear.

**3rd row:** K16. Inc 1 st in next st. K2. Inc 1 st in next st. K3. Work appropriate row of Panel Pat A. K3.

**5th row:** K16. Inc 1 st in next st. K4. Inc 1 st in next st. K3. Work appropriate row of Panel Pat A. K3.

**7th row:** K16. Inc 1 st in next st. K6. Inc 1 st in next st. K3. Work appropriate row of Panel Pat A. K3.

**9th row:** K16. Inc 1 st in next st. K8. Inc 1 st in next st. K3. Work appropriate row of Panel Pat A. K3. 46 sts.

**11th row:** K28. **Turn.** Leave rem sts on st holder.

Work from \*\*\* to \*\*\* as given for Right Mitten.

## Socks

With set of four 4.5 mm needles, cast on 36 (36-40) sts loosely. Divide into 12 (12-13) sts onto first 2 needles and 12 (12-14) sts onto 3rd needle. Join in rnd, placing marker on first st.

**1st rnd:** \*K1. P1. Rep from \* to end of rnd.

Rep this rnd twice more.

**Next rnd: 1st needle:** Rib to end of needle. **2nd needle:** Rib, inc 4 sts evenly across needle. **3rd needle:** Rib to end of needle. 40 (40-44) sts.

**Next rnd:** K12 (12-14). P2. Work 1st row of Panel Pat A across next 12 sts. P2. K12 (12-14) sts.

**Next rnd:** K12 (12-14) sts. P2. Work 2nd row of Panel Pat A across next 12 sts. P2. K12 (12-14) sts.

Panel Pat A is now in position.

Cont even in pat until work from beg measures 8 ins [20.5 cm]

**Make heel:** Slip last 9 (9-10) sts from 3rd needle and first 9 (9-10) sts from 1st needle onto one needle for heel, having contrast marker in centre. Leave 22 (22-24) sts on 2 needles for instep. Break yarn.

With WS facing, rejoin yarn to 18 (18-20) heel sts and work back and forth as follows:

**1st row:** (WS). Sl1. Purl to end of row.

**2nd row:** \*Sl1. K1. Rep from \* to end of row.

Rep last 2 rows until heel measures 2 (2¼-2½) ins [5 (5.5-6) cm].

**Shape heel: 1st row:** P11 (11-12). P2tog. P1. **Turn.**

**2nd row:** Sl1. K5. Sl1. K1. pssso. K1. **Turn.**

**3rd row:** Sl1. P6. P2tog. P1. **Turn.**

**4th row:** Sl1. K7. Sl1. K1. pssso. K1. **Turn.**

**5th row:** Sl1. P8. P2tog. P1. **Turn.**

**6th row:** Sl1. K9. Sl1. K1. pssso. K1. **Turn.** 12 (12-14) sts.

**Size 9/10 only: 7th row:** Sl1. P10. P2tog. **Turn.**

**8th row:** Sl1. K10. Sl1. K1. pssso. **Turn.** 12 sts.

**All sizes:** With RS of work facing, pick up and knit 9 (10-11) sts along left side of heel. With 2nd needle, pat across 22

(22-24) sts from instep. With 3rd needle, pick up and knit 9 (10-11) sts along right side of heel. Knit first 6 sts from heel onto end of 3rd needle. Slip rem 6 sts from heel onto beg of 1st needle. 52 (54-58) sts are now divided 15 (16-17) sts on 1st needle, 22 (22-24) sts on 2nd needle and 15 (16-17) sts on 3rd needle.

Cont in pat as follows:

**1st rnd: 1st needle:** Knit to last 3 sts. K2tog. K1. **2nd needle:** Work even in pat. **3rd needle:** K1. Sl1. K1. pssso. Knit to end of needle.

**2nd rnd:** Work even in pat.

Rep last 2 rnds to 40 (40-44) sts divided as 9 (9-10) sts on 1st needle, 22 (22-24) sts on 2nd needle and 9 (9-10) sts on 3rd needle.

Cont even in pat until foot from picked up sts at heel measures 6¼ (7-7½) ins [16 (18-19) cm].

**Shape toe: 1st rnd: 1st needle:** Knit to last 3 sts. K2tog. K1. **2nd needle:** K1. Sl1. K1. pssso. Pat to last 3 sts. K2tog. K1. **3rd needle:** K1. Sl1. K1. pssso. Knit to end of needle.

**2nd rnd:** Work even in pat.

Rep last 2 rnds to 20 sts, ending with a 1st rnd.

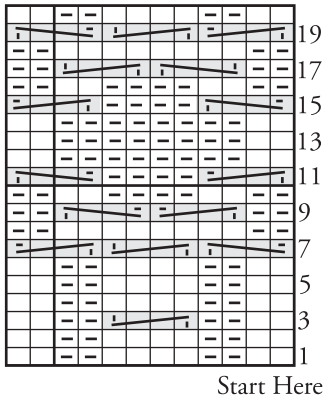
**Next rnd: 1st needle:** Knit. **2nd needle:** K4 (4-5). (K2tog) twice. Knit to end of needle. **3rd needle:** Knit. 18 sts.

Knit 4 sts from 1st needle onto 3rd needle. Graft 2 sets of 9 sts tog.

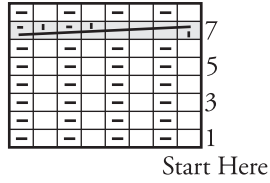
## GRAFTING



**PANEL PAT A**



**PANEL PAT B**



**KEY**

= Knit on RS and purl on WS.

= Purl on RS and knit on WS.

= C4B

= C4F

= T4R

= T4L

= Slip 4 sts onto cable needle and leave at back of work. (K1. P1) twice. (K1. P1) twice from cable needle.



P.O. Box 40, Listowel ON N4W 3H3  
 "home style... life style... your style."