



MATERIALS

Bernat® Satin™ (3.5 oz/100g; 200 yds/182 m)

Sizes	XS/S/M	L/XL	2/3/4/5 XL	
Ebony (04040)	3	5	7	balls

Sizes U.S. 7 (4.5 mm) and U.S. 8 (5 mm) knitting needles. Size U.S. 8 (5 mm) circular knitting needle 40" [100 cm] long **or size needed to obtain gauge**. 4 st markers. Cable needle.

ABBREVIATIONS: www.yarnspirations.com/abbreviations

Beg = Beginning

C8(12-16-20)B = Slip next 4(6-8-10) stitches onto cable needle and leave at back of work. K4(6-8-10), then K4(6-8-10) from cable needle.

C8(12-16-20)F = Slip next 4(6-8-10) stitches onto cable needle and leave at front of work. K4(6-8-10), then K4(6-8-10) from cable needle.

Dec = Decrease(ing)

Inc = Increase(ing)

K = Knit

M1P = Make 1 stitch by picking up horizontal loop lying before next stitch and purling into back of loop

P = Purl

Pat = Pattern

P2tog = Purl next 2 stitches together

P2togtbl = Purl next 2 stitches together through back loops

PM = Place marker

Rep = Repeat

Rnd(s) = Round(s)

RS = Right side

St(s) = Stitch(es)

WS = Wrong side



SIZES

To fit bust measurement

Extra-Small/Small/Medium

28-38" [71-96.5 cm]

Large/Extra Large

40-46" [101.5-117cm]

2/3 X-Large/4/5 X-Large

48-62" [122-157.5 cm]

GAUGE

18 sts and 24 rows = 4" [10 cm] with larger needles in stocking st.

INSTRUCTIONS

Note: Shoulderette is worked in one piece from cuff to cuff.

Cable Panel 1 (worked over 40 sts).
(See Chart I on page 3).

1st and 3rd rows: (RS). P12. K16. P12.

2nd and 4th rows: K12. P16. K12.

5th row: P12. C8B. C8F. P12.

6th row: K12. P16. K12.

7th row: P10. K20. P10.

8th row: K10. P20. K10.

9th row: P9. K22. P9.

10th row: K9. P22. K9.

11th row: P8. K24. P8.

12th row: K8. P24. K8.

13th row: P8. C12B. C12F. P8.

14th row: K8. P24. K8.

15th row: P7. K26. P7.

16th row: K7. P26. K7.

17th row: P6. K28. P6.

18th row: K6. P28. K6.

19th row: P5. K30. P5.

20th row: K5. P30. K5.

21st row: P4. K32. P4.

22nd row: K4. P32. K4.

23rd row: P4. C16B. C16F. P4.

24th row: K4. P32. K4.

25th row: P3. K34. P3.

26th row: K3. P34. K3.

27th row: P2. K36. P2.

28th row: K2. P36. K2.

29th row: P1. K38. P1.

30th row: K1. P38. K1.

31st and 33rd rows: Knit.

32nd, 34th, 36th, 38th, 40th, 42nd,

44th and 46th rows: Purl.

35th row: C20B. C20F.

37th, 39th, 41st, 43rd, 45th and 47th rows: Knit.

48th row: Purl.

These 48 rows form Cable Panel 1.

Cable Panel 2 (worked over 40 sts).
(See Chart II on page 3).

1st and 3rd rows: (RS). Knit.

2nd and 4th rows: Purl.

5th row: C20B. C20F.

6th, 8th, 10th and 12th rows: Purl.

7th, 9th and 11th rows: Knit.

13th row: P1. K38. P1.

14th row: K1. P38. K1.

15th row: P2. K36. P2.

16th row: K2. P36. K2.



BERNAT® CABLE SHOULDERETTE | KNIT

17th row: P3. K34. P3.
18th row: K3. P34. K3.
19th row: P4. C16B. C16F. P4.
20th and 22nd rows: K4. P32. K4.
21st row: P4. K32. P4.
23rd row: P5. K30. P5.
24th row: K5. P30. K5.
25th row: P6. K28. P6.
26th row: K6. P28. K6.
27th row: P7. K26. P7.
28th row: K7. P26. K7.
29th row: P8. K24. P8.
30th row: K8. P24. K8.
31st row: P8. C12B. C12F. P8.
32nd row: K8. P24. K8.
33rd row: P9. K22. P9.
34th row: K9. P22. K9.
35th row: P10. K20. P10.
36th row: K10. P20. K10.
37th row: P12. K16. P12.
38th row: K12. P16. K12.
39th row: P12. C8B. C8F. P12.
40th row: K12. P16. K12.
41st row: P12. K16. P12.
42nd row: As 40th row.
These 42 rows form Cable Panel 2.

With pair of smaller needles, cast on **42 (46-50)** sts.
1st row: (RS). K1. *P2. K2. Rep from * to last st. K1.
Rep last row (K2. P2) ribbing until work from beg measures 2" [5 cm], ending on a WS row.

Change to larger needles and proceed as follows:

1st row: (RS). P1. M1P. **P0 (2-4)**. PM. Work 1st row of Cable Panel 1. PM. **P0 (2-4)**. M1P. P1. **44 (48-52)** sts.
2nd row: Knit to marker. Slip marker. Work 2nd row of Cable Panel 1. Slip marker. Knit to end of row.
3rd row: Purl to marker. Slip marker. Work 3rd row of Cable Panel 1. Slip marker. Purl to end of row.
4th row: Knit to marker. Slip marker. Work 4th row of Cable Panel 1. Slip marker. Knit to end of row
Cable Panel 1 is now in position.

Cont in pat as established until 48 rows of Cable Panel 1 are complete, AT THE SAME TIME, inc 1 st at each end of next and every 4th row to **62 (68-72)** sts.

Cont even in pat, rep 31st to 48th rows of Cable Panel 1 until work from beg measures approx **39½ (46-53)" [100.5 (117-134.5)** cm], ending on a 48th row.

Proceed as follows:

1st row: (RS). P1. Purl to marker. Work 1st row of Cable Panel 2. Slip marker. Purl to last st. P1.
2nd row: Knit to marker. Slip marker. Work 2nd row of Cable Panel 2. Slip marker. Knit to end of row.
3rd row: Purl to marker. Slip marker. Work 3rd row of Cable Panel 2. Slip marker. Purl to end of row.

4th row: Knit to marker. Slip marker. Work 4th row of Cable Panel 2. Slip marker. Knit to end of row.

Cont in pat as established until 42 rows of Cable Panel 2 are complete AT THE SAME TIME, dec 1 st at each end of next and every following 4th row to **42 (46-50)** sts.

Change to pair of smaller needles.

Next row: (RS). K1. *P2. K2. Rep from * to last st. K1.
Rep last row (K2. P2) ribbing until cuff measures 2" [5 cm], ending on a WS row. Cast off loosely in ribbing.

Finishing

PM at side edges **14 (14½-15)" [35.5 (37-38)** cm] from cast on and cast off edges. Sew seams from cuff to marker to form sleeves.

Edging

With RS facing, circular needle and beg at underarm seam, pick up and knit **148 (180-212)** sts evenly around entire edge of Shoulderette. Join in rnd, PM at first st.
Next rnd: *K2. P2. Rep from * around. Rep last rnd (K2. P2) ribbing until edging measures 2" [5 cm]. Cast off loosely in ribbing.



Chart I (Cable Panel 1)

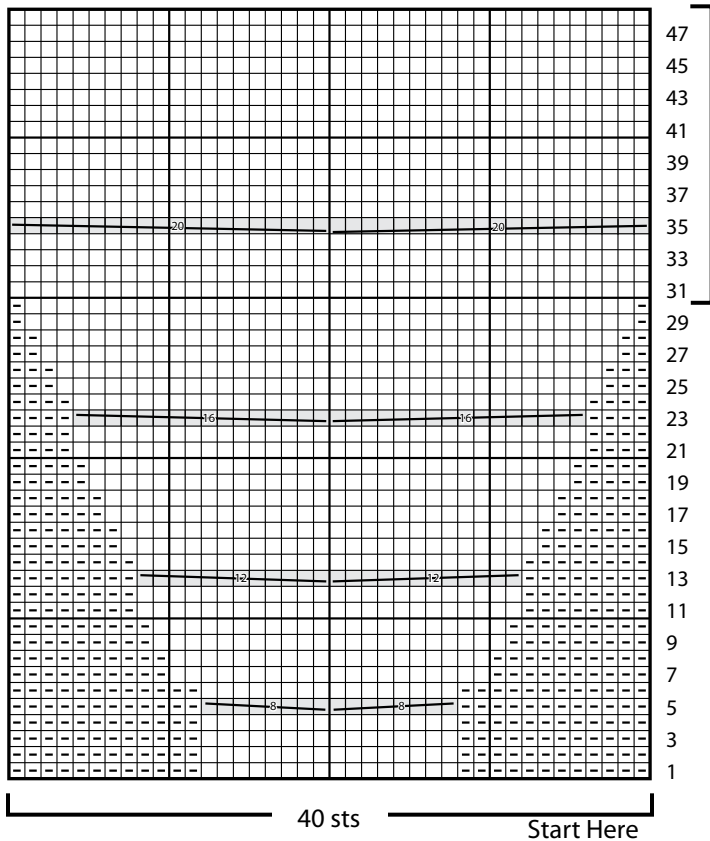
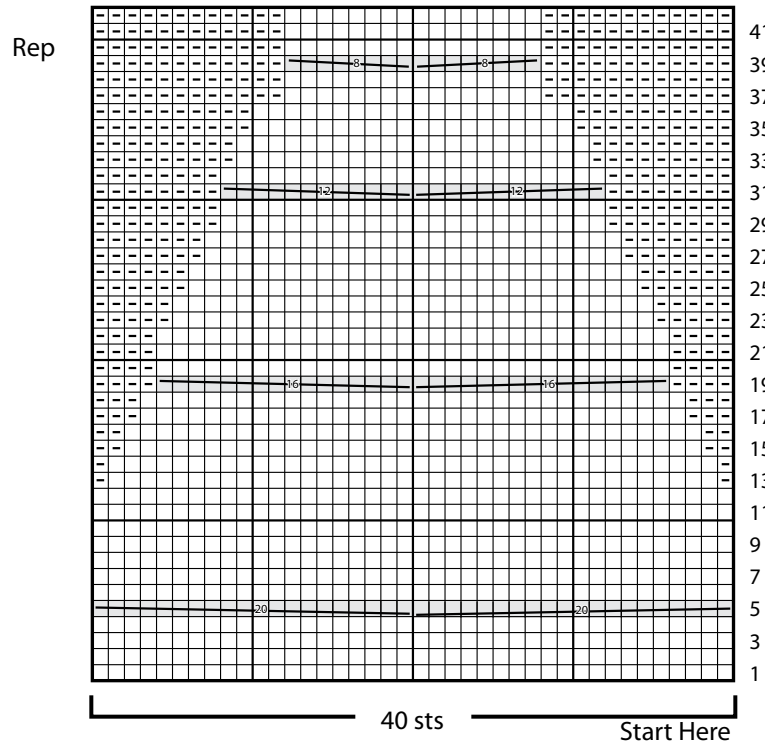


Chart II (Cable Panel 2)



Key

- = Knit on RS rows, Purl on WS rows
- = Purl on RS rows, Knit on WS rows



= C8B



= C8F



= C12B



= C12F



= C16B



= C16F



= C20B



= C20F