



INSTRUCTIONS

Cast on 87 sts.

Knit 3 rows (garter st), noting first row is WS.

1st row: (RS). K3. *K1. (yo. K2tog) 3 times. yo. Center dec. yo. (ssk. yo) 3 times. Rep from * to last 4 sts. K4.

2nd row: K3. Purl to last 3 sts. K3.

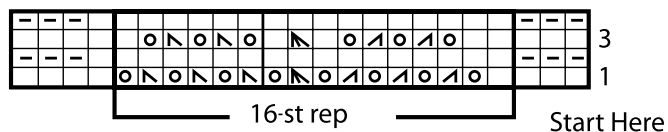
3rd row: K3. *K2. (yo. K2tog) twice. yo. K1. Center dec. K1. (yo. ssk) twice. yo. K1. Rep from * to last 4 sts. K4.

4th row: As 2nd row.

These 4 rows form pat. Cont in pat until work from beg measures approx 53½" [136 cm], ending with a 3rd row.

Knit 3 rows (garter st). Cast off.

Knotted Fringe: Cut lengths of yarn 36" [91.5 cm] long. Taking 3 strands tog, fold in half and knot into fringe having 11 knots across each end of Shawl. Divide each fringe in half and knot in rows as shown in diagram. Trim fringe evenly.



BERNAT® SATIN CHEVRON SHAWL (TO KNIT)

MEASUREMENTS

Approx 21 x 54" [53.5 cm x 137 cm] (excluding fringe).

MATERIALS

Bernat® Satin (120 g/4.2 oz; 230 m/251 yds)

00423 (Flamingo)

4 balls

Size 5 mm (U.S. 8) knitting needles **or size needed to obtain gauge.**

GAUGE: 18 sts and 24 rows = 4" [10 cm] in stocking stitch.

ABBREVIATIONS

www.bernat.com/abbreviations

Approx = Approximately.

Beg = Beginning.

Center dec (worked over 3 sts) = slip next 2 sts as if to K2tog, K1, then pass slipped sts over knit st – center of 3 sts should be on top of decrease (2 sts have been decreased).

Cont = Continue(ity).

K = Knit.

K2tog = Knit next 2 stitches together.

Pat = Pattern.

Rep = Repeat.

RS = Right side.

Ssk = Slip next 2 stitches knitwise one at a time. Pass them back onto left-hand needle, then knit through back loops together. St(s) = Stitch(es).

St(s) = Stitch(es).

Tog = Together.

WS = Wrong side.

yo = Yarn over.

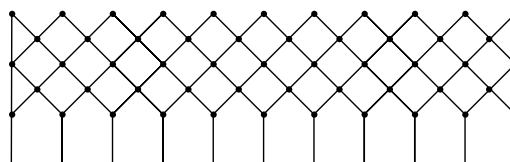
KEY

☐ = Knit on RS rows. Purl on WS rows. ☐ = ssk

☐ = Purl on RS rows. Knit on WS rows. ☐ = K2tog

☐ = yo ☐ = Center dec

FRINGE



BERNAT®
Satin

P.O. Box 40, Listowel ON N4W 3H3
"home style... life style... your style."