



CROCHET | SKILL LEVEL: **EASY**

ABBREVIATIONS

Approx = Approximately

Beg = Beginning

Ch = Chain(s)

Cont = Continue(ity)

Lp St = Loop stitch (worked on WS) = Yoh and insert hook in next stitch. Hold working yarn over top of left index finger and pull up 1" [2.5 cm] loop. Grab working yarn behind index finger and pull through stitch. Hold loop in position with right hand to front of work. Yoh and draw through 3 loops on hook. Loop is formed on RS of work.

Rep = Repeat

RS = Right side

Sc = Single crochet

St(s) = Stitch(es)

Tog = Together

WS = Wrong side

Yoh = Yarn over hook

MEASUREMENT

Approx 20" [51 cm] square.

GAUGE

8 sc and 9 rows = 4" [10 cm].

INSTRUCTIONS

Notes:

Color changes are worked in intarsia technique. Wind small balls of colors to be used, one for each separate area of color in the design. Start new colors at appropriate points. **Do not** carry color not in use along top of work. To join new color, work to last 2 loops on hook of first color. Yoh with new color, draw through loops and proceed with new color.

MATERIALS

Bernat® Sheepy™ (8.8 oz/250 g; 149 yds/136 m)

Contrast A Cotton Tail (63001) **1 ball**

Contrast B Gray Squirrel (63004) **1 ball**

Contrast C Bunny Brown (63002) **1 ball**

Size U.S. L/11 [8 mm] crochet hook **or size needed to obtain gauge.**
Yarn needle. 20" [51 cm] square pillow form.

FRONT

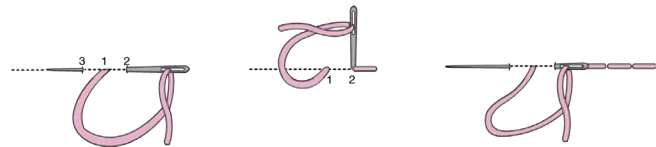
With B, ch 42.

1st row: (RS). With B, 1 sc in 2nd ch from hook. 1 sc in each of next 12 ch. With A, 1 sc in each of next 15 ch. With B, 1 sc in each ch to end of chain. Turn. 41 sc.

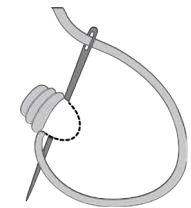
First row of chart is now in place.

Keeping cont of chart, work each row in sc until chart is complete, reading RS rows from *right to left* and WS rows from *left to right*, and noting Lp sts are worked in Rows 28 and 30. Fasten off.

Using back st, embroider Eyes and Mouth as shown in photo. Embroider Nose in satin st.



Back Stitch



Satin Stitch

BACK

With A, ch 42.

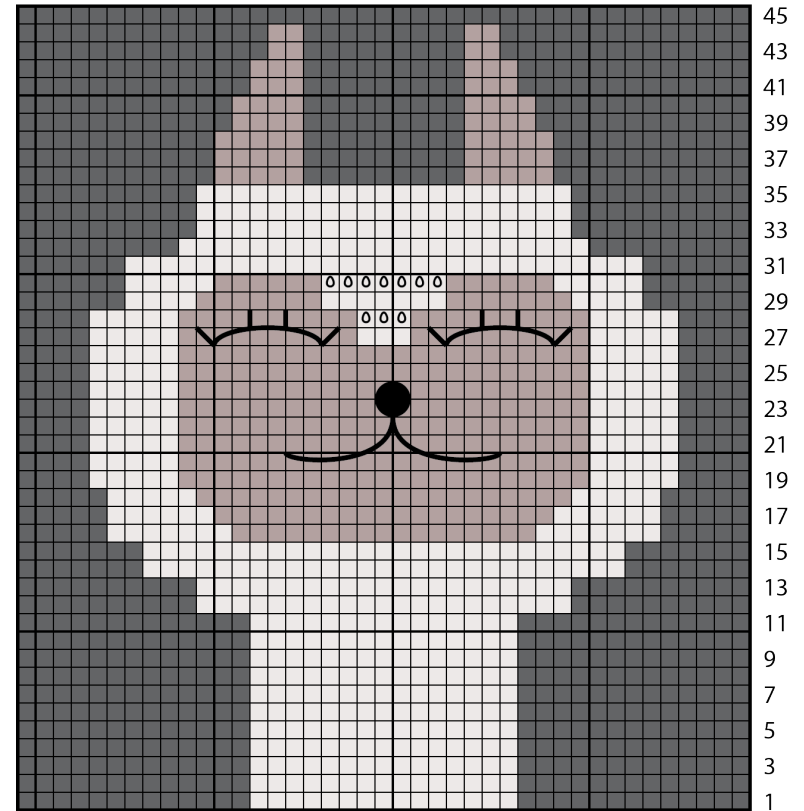
1st row: 1 sc in 2nd ch from hook. 1 sc in each ch to end of chain. Turn. 41 sc.

2nd row: Ch 1. 1 sc in each st to end of row. Turn.

Rep 2nd row until work from beg measures 20" [51 cm]. Fasten off.

FINISHING

Sew 3 sides of Pillow tog. Insert pillow form. Sew opening closed.



Start here

Key

- = A
- = B
- = C
- ⊠ = Loop stitch
- = Back stitch
- = Satin stitch