



BUY·CARON·COM

Subscribe to Caron Connections, our free e-newsletter.

Enter your e-mail address

Subscribe

CARON

yarn free projects where to buy links learning contact us caron connections news latch hook blog



...click for free patterns and more!

Combo Cable Scarf

with

SIMPLY SOFT

designed by Lisa Gentry

TECHNIQUE USED: Knit



FINISHED MEASUREMENTS:

6 3/4" wide x 60" long, lightly blocked



Yarns

stitch.rock.love

Sheep(ish)

Simply Soft®

Simply Soft® Chunky

Simply Soft® Eco

Simply Soft® Heather

Simply Soft® Light **NEW**

Simply Soft® Paints

Simply Soft® Party

Simply Soft® Shadows

Craft & Rug Yarn

Dazzleaire

Natura®

One Pound



(Check out our newest yarns!)

Tulip® Hooks & Needles

Tulip/Etimo Crochet

Hooks

Tulip Knitting Needles

Caron Latch Hook Kits

Caron® Classics

Natura®

WonderArt®



MATERIALS

buy all your supplies now at...

BUY·CARON·COM

Caron International's Simply Soft

(100% Acrylic, 6 oz/170g, 315 yd/288 m):

#0013 Nutmeg: 2 skeins

buy all your supplies now at...

BUY·CARON·COM

One pair each U.S. size 9(5.5mm)

needles or size to obtain gauge

Cable needle

Yarn needle

SPECIAL TERMS

C3F: Slip 2 sts to cn, hold to front, k1, k2 from cn.

C3B: Slip 1 st to cn, hold to back, k2, k1 from cn.

LT: Insert needle between first and second sts from back to front and knit second st through front loop, then knit first st through front loop and slip both sts off needle together.



GAUGE

In Stockinette stitch, 17 sts and 23 rows = 4"/10 cm



click images to enlarge

STITCHES USED

Cable Pattern: (panel of 37 sts)

Note: You may work pattern from text or Chart.

Row 1 all WS Rows (WS): [K1, p1] twice, k3, p2, k3, p13, k3, p2, k3, [p1, k1] twice.

Row 2: [K1, p1] twice, p3, LT, p3, k3, C3F, k4, C3B, p3, LT, p3, [p1, k1] twice.

Row 4: [K1, p1] twice, p3, LT, p3, k4, C3F, k2, C3B, k1, p3, LT, p3, [p1, k1] twice.

Row 6: [K1, p1] twice, p3, LT, p3, k5, C3F, C3B, k2, p3, LT, p3, [p1, k1] twice.

Row 8: [K1, p1] twice, p3, LT, p3, C3F, k4, C3B, k3, p3, LT, p3, [p1, k1] twice

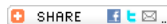
Row 10: [K1, p1] twice, p3, LT, p3, k1, C3F, k2, C3B, k4, p3, LT, p3, [p1, k1] twice.

Row 12: [K1, p1] twice, p3, LT, p3, k2, C3F, C3B, k5, p3, LT, p3, [p1, k1] twice.

Rep Rows 1-12 for Cable Pattern.

Printer Friendly PDF

stitch diagram

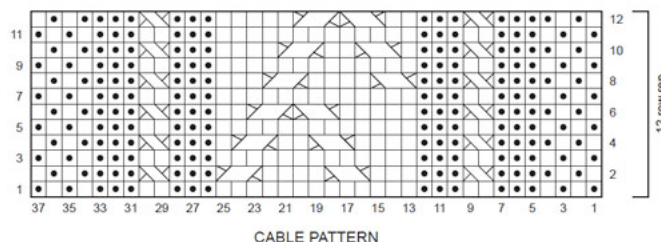


SCARF

CO 37 sts. Work in Cable Pattern until piece measures approx 60" from beg, ending with a WS row. **Note:** You may work pattern from text or Chart.

BO all sts.

Using yarn needle, weave in ends. Block lightly.



LEGEND	
	Knit on RS, purl on WS.
	Purl on RS, knit on WS.
	LT
	C3F
	C3B

|| Yarns || Free Projects || Where to Buy || Links || Learning || Contact Us || Caron Connections || News || Latch Hook ||

Visit Bond America online

Visit Buy.Caron.com

©2011 Caron International