



NORO

MAGAZINE

Hazelnut Cream



25 Hazelnut Cream

●●●○ INTERMEDIATE

Design by Sandi Prosser



Sizes

Sized for Small (Medium, Large).

Finished Measurements

- Circumference at lower edge after blocking 42 (48, 54)in/106.5 (122, 137)cm.
- Length 18 (18½, 19)in/45.5 (47, 48)cm.

Materials

- 2 (3, 3) x 50g skeins of Noro *Silk Garden Sock* in #s269.
- Size US 5/3.75mm circular needle, 24in/60cm long, or size to obtain gauge.
- Size US 3/3.25mm circular needle, 16in/40cm long (for size Small only.)
- Size US 5/3.75mm circular needle, 16in/40cm long (for sizes Medium and Large only.)
- Stitch markers.

Gauge

24 sts and 34 rnds = 4in/10cm over chart 1 after blocking using size US 5/3.75mm needle.

TAKE TIME TO CHECK GAUGE.

General and Knitting Abbreviations

approx approximately; **beg** begin(ning); **CC** contrasting color; **cm** centimeter(s); **cn** cable needle; **cont** continue(ing); **dec** decrease(ing); **dpn** double-pointed needle(s); **est** established; **fol** follow(s) (ing); **g** gram(s); **in** inch(es); **inc** increase(ing); **k** knit; **kfb** knit into front and back of stitch; **LH** left-hand; **mm** millimeter(s); **MC** main color; **M1** make one (see glossary); **p** purl; **pat**(s) pattern(s); **pm** place marker; **psso** pass slip stitch(es) over; **rem** remain(s) (ing); **rep** repeat; **rev** reverse(ing) (ed); **RH** right-hand; **rnd(s)** round(s); **RS** right side; **SKP** slip 1, knit 1, pass slip stitch over; **SK2P** slip 1, knit 2 stitches together, pass slip stitch over k2tog; **S2KP** slip 2 stitches together knitwise, knit 1, pass slip stitches over knit 1; **sl** slip; **sm** slip marker; **ssk/ssp** slip, slip, knit/purl (see glossary); **st(s)** stitch(es); **St st** Stockinette stitch; **tbl** through back loop; **tog** together; **WS** wrong side(s); **wyib** with yarn in back; **wyif** with yarn in front; **yo** yarn over (hook or needle); * repeat directions following * as many times as indicated; [] repeat directions inside brackets as many times as indicated.

Glossary

bind off To finish off an edge and keep stitches from unraveling by lifting the first stitch over the second, the second over the third, etc. (UK: cast off).

bind off in ribbing Maintain the rib pattern as you bind off (knit the knit stitches; purl the purl stitches) (UK: cast off in ribbing)

cast on Form a foundation row by making specified number of loops on the knitting needle.

decrease Reduce the number of stitches in a row (i.e., knit 2 together; purl 2 together).

increase Add to the number of stitches in a row (i.e., knit in front and back of stitch).

knitwise Insert the needle into the stitch as if you were going to knit it.

make one Insert tip of LH needle from front to back under the strand between the last stitch worked and the next stitch on the needle. Knit into the back loop to increase one stitch.

no stitch On some charts, “no stitch” is indicated with shaded spaces where stitches have been decreased or not yet made. In such cases, work the stitches of the chart, skipping over the “no stitch” spaces.

place markers Loop a piece of contrasting yarn or a purchased stitch marker onto the needle.

pick up and knit/purl Knit (or purl) into the loops along an edge.

purlwise Insert the needle into the stitch as if you were going to purl it.

selvage stitch Edge stitch that helps make seaming easier.

skip Skip specified number of stitches of the previous row and work into next stitch (UK: miss).

slip, slip, knit/purl Slip next two sts knitwise (purlwise), one at a time, to right-hand needle. Insert tip of left-hand needle into fronts of these sts from left to right and knit/purl them together to decrease one stitch.

slip stitch In knitting, pass a stitch from the left-hand to the right-hand needle as if to purl without working it. In crochet, insert hook through loop or edge, yarn over and pull through loop on hook (UK: ss or sc).

work even Continue in specified pattern without increasing or decreasing (UK: work straight).

yarn over In knitting, make a new stitch by placing the yarn over the right-hand needle (UK: yfwd, yon, yrn). In crochet, wind yarn around hook. (UK: yoh or yrh).

Capelet

With longer circular needle, cast on 255 (289, 323) sts.

Begin Chart 1

Rnd 1 Work 17-st rep 15 (17, 19) times around.

Cont to work char t in this manner until rnd 36 is complete, then rep rnds 6–36 once more.

Begin Chart 2

Rnd 1 Work st rep 15 (17, 19) times around.

Cont to work char t in this way until rnd 11 is complete—195 (221, 247) sts.

Collar

Next (dec) rnd Knit, dec 3 (4, 7) sts evenly around—192 (217, 240) sts.

Next rnd *P3, k3 (4, 5); rep from * around.

Next rnd Knit.

Rep last 2 rnds 10 times more.

Next (dec) rnd *P3, k2tog, k1 (2, 3); rep from * around—160 (186, 210) sts.

Next rnd Knit.

Next rnd *P3, k2 (3, 4); rep from * around.

Rep last 2 rnds 8 times more.

For Sizes Medium & Large Only

Knit 1 rnd.

Next (dec) rnd *P3, k2tog, k1 (2); rep from * around—155 (180) sts.

Next rnd Knit.

Next rnd *P3, k2 (3); rep from * around.

Rep last 2 rnds once more.

For Size Large Only

Knit 1 rnd.

Next (dec) rnd *P3, k2tog, k1; rep from * around—150 sts.

Next rnd Knit.

Next rnd *P3, k2; rep from * around.

Rep last 2 rnds once more.

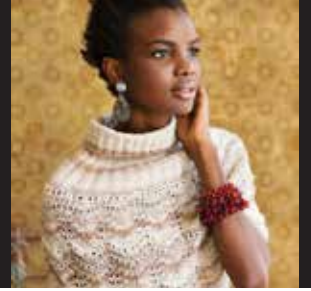
For All Sizes

Change to shorter circular needle.

Next (dec) rnd *P1, p2tog, k2; rep from * around—128 (124, 120) sts.

Next rnd *P2, k2; rep from * around.

25 Hazelnut Cream



Next rnd Knit.

Rep last 2 rnds until piece measures 18 (18½, 19)in/45.5 (47, 48)cm from beg.

Bind off. ■

Chart 1

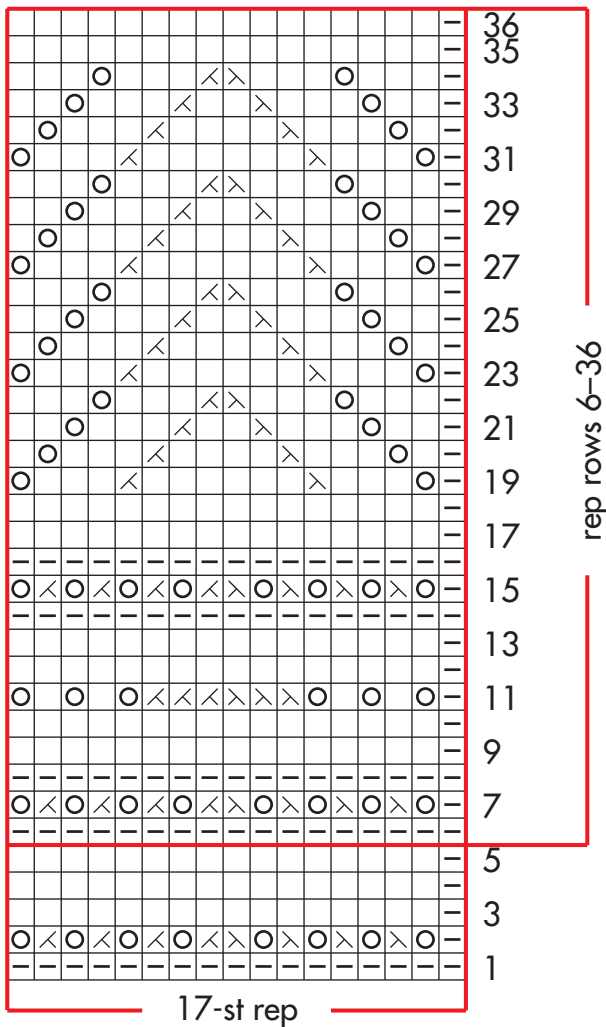
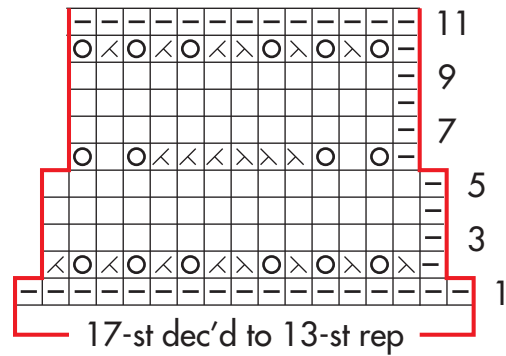


Chart 2



- knit
- ▢ purl
- ⊗ k2tog
- ⊗ ssk
- ⊙ yo