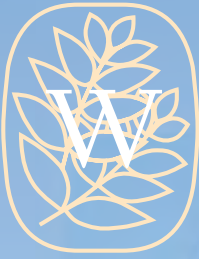


R O W A N



Judy

By Marie Wallin





Judy

by Marie Wallin



SIZE

S	M	L	XL	XXL	
To fit bust					
81-86	91-97	102-107	112-117	122-127	cm
32-34	36-38	40-42	44-46	48-50	in

MEASUREMENTS

Width					
44	49	55.5	61	68	cm
17½	19½	22	24	27	in
Length					
54	56	58	60	62	cm
21½	22	23	23½	24½	in
Sleeve Length					
44	45	46	46	46	cm
17½	17½	18	18	18	in

YARN

Wool Cotton 4ply and Kidsilk Haze

A WC String 481					
3	3	3	4	4	x 50gm
B KSH Pearl 590					
3	3	3	4	4	x 25gm

NEEDLES

1 pair 2¾mm (no 12) (US 2) needles
 1 pair 3¼mm (no 10) (US 3) needles
 2¾mm (no 12) (US 2) circular needle, 80 cm long

TENSION

28 sts and 36 rows to 10 cm measured over patt and st st using 3¼mm (US 3) needles.

Pattern note: When working lace pattern from chart, do **NOT** work an inc unless there are sufficient sts to work the corresponding dec so that the number of sts remains constant (except where shaping occurs).

BACK

Using 2¾mm (US 2) needles and yarn A, cast on 123 [137: 155: 171: 191] sts.

Row 1 (RS): *K1, P1, rep from * to last st, K1.

Row 2: *P1, K1, rep from * to last st, P1.

These 2 rows form rib.

Work in rib for a further 6 rows, ending with RS facing for next row.

Change to 3¼mm (US 3) needles.

Beg with a K row, work in st st as folls:

Work 18 [20: 24: 32: 36] rows.

Dec 1 st at each end of next and 4 foll 6th rows.

113 [127: 145: 161: 181] sts.

Work 7 rows, ending with RS facing for next row.

Inc 1 st at each end of next and 4 [4: 3: 2: 1] foll 6th rows.

123 [137: 153: 167: 185] sts.

Work 5 [3: 5: 3: 5] rows, ending with RS facing for next row.

Break off yarn A and join in yarn B.

Inc 1 st at each end of – [-: 1st: 3rd: 1st] and – [-: -: 1: 1] foll 6th row. 123 [137: 155: 171: 189] sts.

Work 10 [10: 9: 1: 3] rows, ending with RS facing for next row.

Break off yarn B and join in yarn A.

Inc 1 st at each end of – [-: -: -: 3rd] row.

123 [137: 155: 171: 191] sts.

Cont until back meas 30 cm, ending with RS facing for next

row.

Break off yarn A and join in yarn B.

Beg and ending rows as indicated, repeating the 24 st patt rep 5 [5: 5: 7: 7] times across each row and repeating the 48 row patt rep throughout, now work in patt from chart for back and front as follows:

Cont straight until back meas 52 [54: 56: 58: 60] cm, ending with RS facing for next row.

Shape back neck

Next row (RS): Patt 39 [46: 54: 62: 70] sts and turn, leaving rem sts on a holder.

Work each side of neck separately.

Dec 1 st at beg of next row. 38 [45: 53: 61: 69] sts.

Shape shoulder

Cast off 12 [14: 17: 19: 22] sts at beg and dec 1 st at end of next row, then dec 1 st at beg of foll row. 24 [29: 34: 40: 45] sts.

Cast off 12 [14: 17: 20: 22] sts at beg of next row.

Work 1 row, ending with RS facing for next row.

Cast off rem 12 [15: 17: 20: 23] sts.

With RS facing, slip centre 45 [45: 47: 47: 51] sts onto a stitch holder, rejoin yarn to rem sts and patt to end.

Complete to match first side, reversing shapings.

FRONT

Work as given for back until 32 [32: 36: 36: 40] rows less have been worked than on back to beg of shoulder shaping, ending with RS facing for next row.

Shape neck

Next row (RS): Patt 47 [54: 63: 71: 80], turn and leave rem sts on a holder.

Work each side of neck separately.

Dec 1 st at neck edge of next 4 rows, then on foll 3 alt rows, then on 4 [4: 5: 5: 6] foll 4th rows. 36 [43: 51: 59: 67] sts.

Work 5 rows more, ending with RS facing for next row.

Shape shoulder

Cast off 12 [14: 17: 19: 22] sts at beg of next row and 12 [14: 17: 20: 22] sts at beg of foll alt row.

Work 1 row.

Cast off rem 12 [15: 17: 20: 23] sts.

With RS facing, slip centre 29 [29: 29: 29: 31] sts onto a stitch holder, rejoin yarn to rem sts and patt to end.

Complete to match first side, reversing shapings.

SLEEVES

Using 2¾mm (US 2) needles and yarn B, cast on 61 [65: 67: 67: 71] sts.

Working 4 rows in g st ending with RS facing for next row.

Change to 3¼mm (US 3) needles.

Beg and ending rows as indicated and repeating the 48 row patt rep throughout, now work in patt from chart for sleeves as follows:

Inc 1 st at each end of 9th [9th: 9th: 7th: 7th] and every foll 10th [8th: 8th: 6th: 6th] row to 89 [73: 91: 81: 93] sts, then on every foll - [10th: 10th: 8th: 8th] row until there are - [95: 101: 107: 113] sts, taking inc sts into patt.

Cont straight until sleeve meas 44 [45: 46: 46: 46] cm, ending with RS facing for next row.

Cast off.

MAKING UP

Press as described on the information page.

Join shoulder seams using back stitch, or mattress stitch if preferred.

Mark points along side seam edges 17 [18: 19: 20: 21] cm either side of shoulder seams to denote base of armhole openings.

Neckband

With RS facing and using 2¾mm (US 2) circular needle and yarn B, pick up and knit 29 [29: 31: 31: 33] sts down left side of front neck, K across 29 [29: 29: 29: 31] sts from front holder, pick up and knit 29 [29: 31: 31: 33] sts up right side of front neck, 3 sts down right side of back neck, K across 45 [45: 47: 47: 51] sts from back holder, then pick up and knit 3 sts up left side of back neck. 138 [138: 144: 144: 154] sts.

Round 1 (RS): Knit.

Round 2: Purl.

Rep these 2 rounds once more.

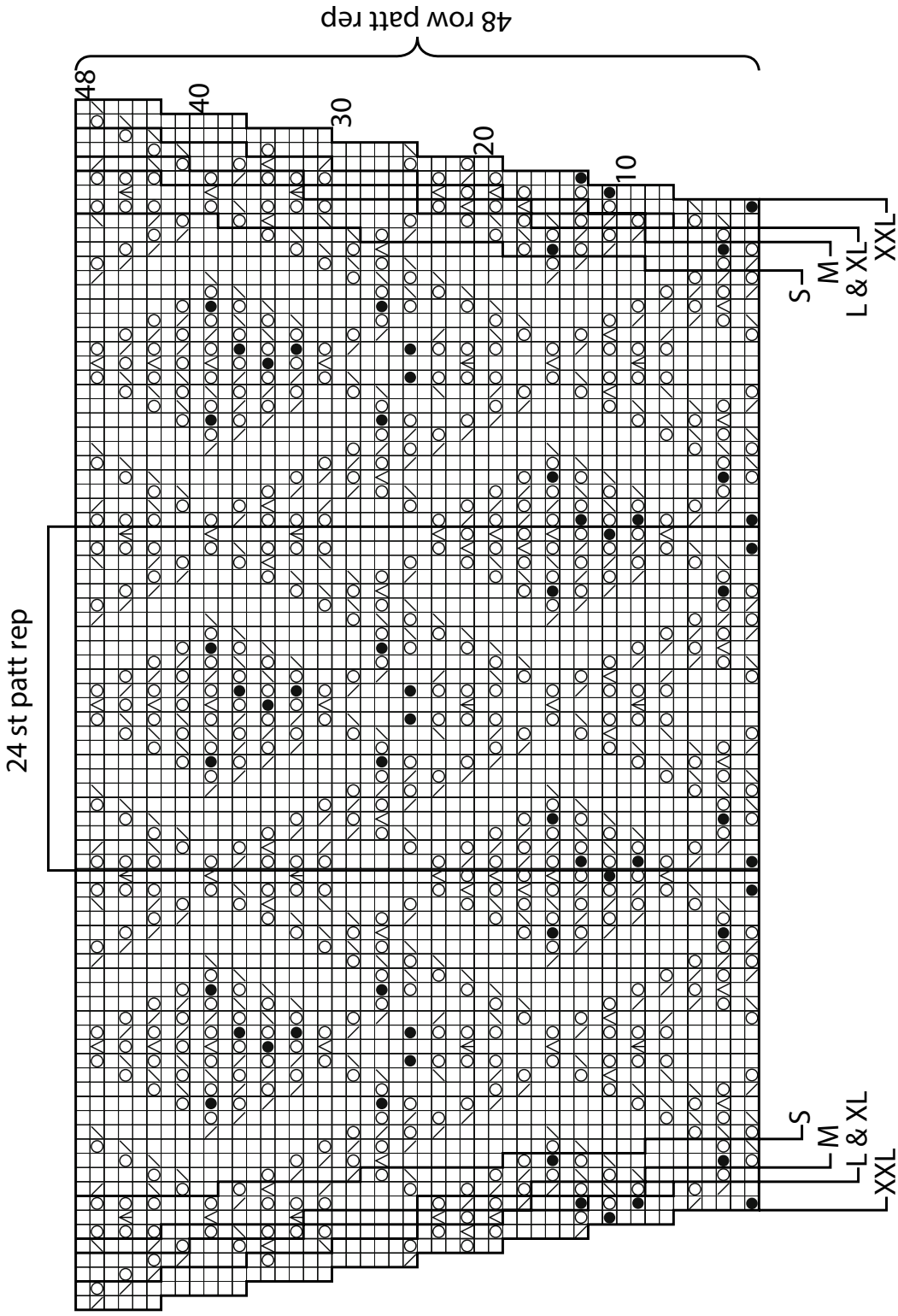
Cast off.

See information page for finishing instructions, setting in sleeves using the straight cast-off method.

Sleeves

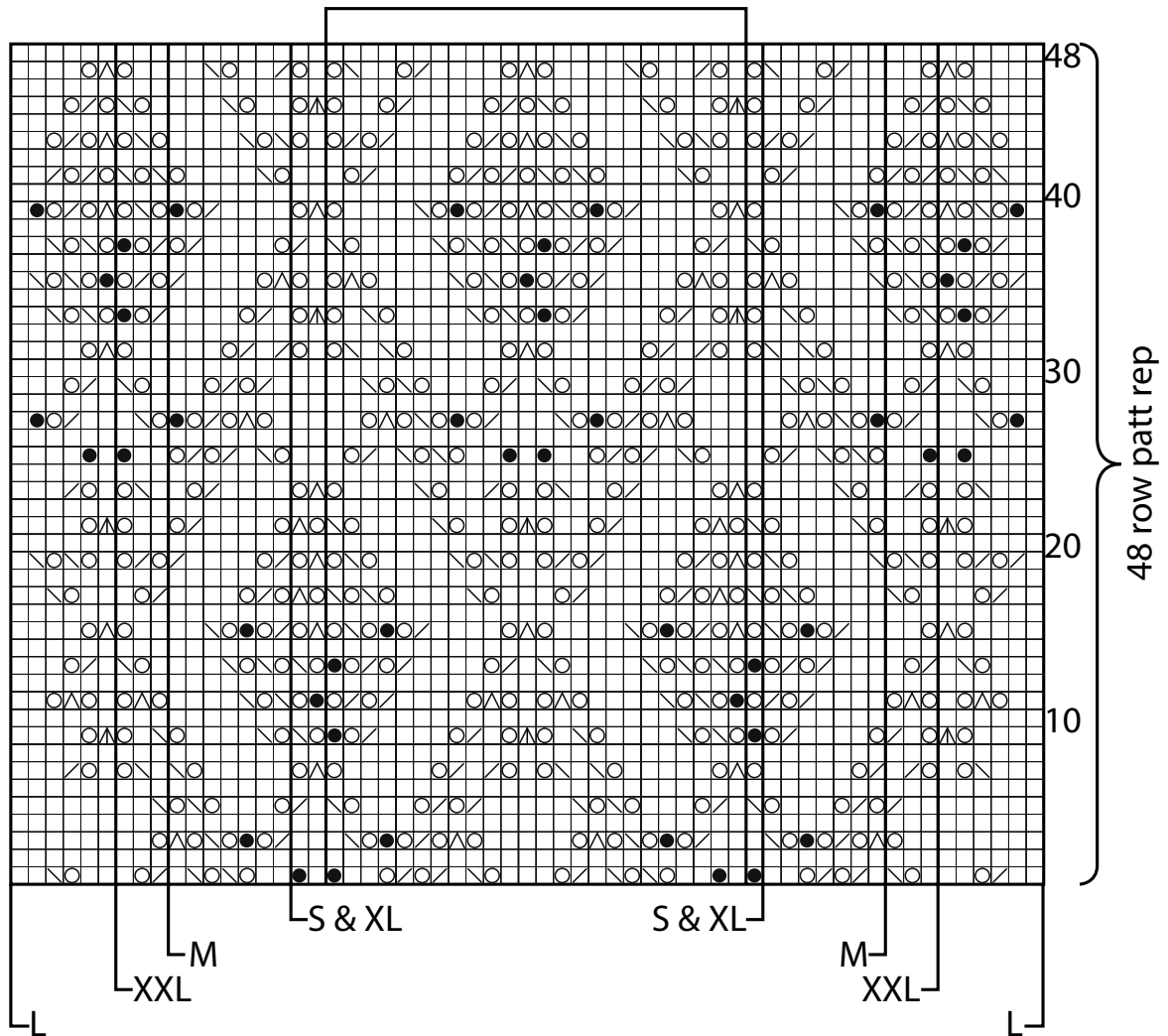
key

- K on RS, P on WS
- yo
- SI 1, K1, pss0
- K2tog
- SI 1, K2tog, pss0
- SI 2, K1, p2sso
- K1 tbl



Back and Front

24 st patt rep



STORE LOCATOR

INFORMATION PAGES

If you're having difficulty viewing or printing our PDF patterns, please ensure you have the latest version of Adobe Acrobat Reader. Download the latest version here; <http://get.adobe.com/reader/>

All right reserved. Reproduction in whole or any part of all material, including illustrations and designs, in this publication/pattern is strictly forbidden and is sold on the condition that it is used for non commercial purposes. No part may be reproduced, stored in a retrieval system, or transmitted in any form or by any means electronic, electrostatic, magnetic tape, mechanical, photocopying, recording or otherwise without prior permission of the copyright owners having been given in writing. Yarn quantities are approximate and are based on average requirements. Images and shades are for guidance only as colours may not display accurately on screen or in printed format. Contact your local stockist to view a fringed (not digital reproduction) yarn shade card.

