

Design S9020 / Colorful Granny Pillow



Size: 16 x 32"/40 x 80 cm

Materials:

Schachenmayr Catania, 300 g linen color #00248, 150 g blue iris color #00384, 50 g each apple green color #00205, delft blue color #00261, kiwi color #00212, marigold color #00383 and dark olive color #00387.

1 Milward crochet hook size US D-3 (3 mm),
Blunt yarn needle,

1 zipper, 24"/60 cm long, in matching color,
matching color sewing thread.

Granny Square A:

Make an adjustable ring as follows: Wrap the yarn loosely around 2 fingers, the loose tail near your fingertips and the working yarn to the inside. With the crochet hook, bring the working strand under the outside strand, then draw a loop through. Draw through another loop to complete the single crochet. When all the stitches for the square have been worked into the ring, close the ring by pulling the loose tail. Then follow chart A working row 1 into the ring, join with slip st to the beginning ch.

Granny Square B:

Begin same as Granny Square A, but follow Chart B.

Note: For the multi-colored Granny Squares work rnds 1 + 2 in stated colors and always work rnds 3 + 4 with linen. For the color change on Granny Squares A, work the joining sl st with the new color, for the Granny Squares B join the new color in the dc rnd.

Gauge:

1 Granny Square = 3¼ x 3¼"/8 x 8 cm.

INSTRUCTIONS

Front: Make a total of 50 Granny Squares following the table, that is, work squares 1-12 as multi-colored (for a total of 40 squares) and square 13 in a single color (for a total of 10 squares):

Number	Granny	Chart	Color
4 times	1	A	kiwi, marigold
4 times	2	B	dark olive, apple green
4 times	3	A	apple green, blue iris
4 times	4	B	blue iris, dark olive
3 times	5	A	marigold, delft blue
3 times	6	A	apple green, dark olive
3 times	7	B	blue iris, marigold
3 times	8	A	kiwi, delft blue
3 times	9	B	marigold, kiwi
3 times	10	B	dark olive, blue iris
3 times	11	A	blue iris, kiwi
3 times	12	B	delft blue, apple green
10 times	13	A	blue iris

Arrange the Granny Squares following diagram 1 and slip stitch the squares together using matching colors. Lay the Granny Squares with right-sides facing and always joining the outer edges. Join the horizontal seams first, then the vertical seams.

Design S9020 / Colorful Granny Pillow

Back: Make 50 solid-color Granny Squares in the following colors:

Number	Granny	Chart	Color
27 times	1	A	linen
7 times	2	A	blue iris
4 times	3	A	apple green
3 times	4	A	delft blue
3 times	5	A	kiwi
3 times	6	A	marigold
3 times	7	A	dark olive

Arrange the Granny Squares following diagram 2 and join together as described for the Front.

FINISHING

Work a round of sc around the right side of each piece, using blue iris along the blue iris-colored squares and linen on the linen-colored squares and on the back, use linen, as follows:

Work 1 sc in each st, work 2 sc in each chain space and work 5 sc in each of the 4 outer corners.

Lay the two pieces with the wrong-sides together and join them together with sc using blue iris. Along the lower edge, leave a 24"/60 cm long slit open for the zipper, beginning at 4"/10.5 cm before the corner and end at 4"/10.5 cm after the last corner. Then work a row of sc along each side of slit.

With blue iris work 1 row backwards sc (= sc from left to right) around entire outer edge, working in every 2nd stitch of previous round. Do not work backwards sc along slit edge.

Tack the zipper under the slit opening then sew in place.

Diagram 1

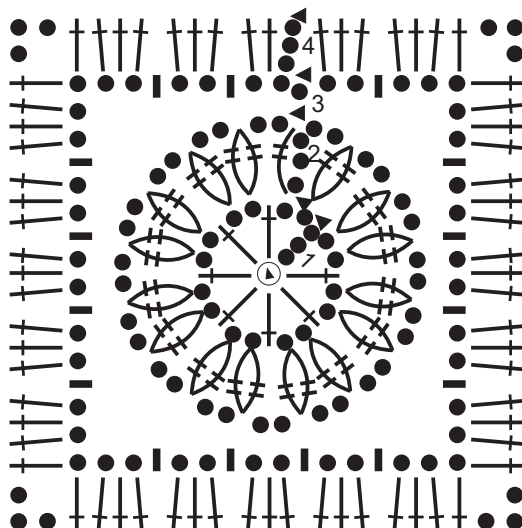
13	1	2	3	4	5	2	6	7	13
13	3	4	8	9	1	10	11	12	13
13	8	9	6	12	11	7	5	10	13
13	1	2	3	4	5	2	6	7	13
13	3	4	8	9	1	10	11	2	13

Diagram 2

1	2	4	1	3	1	2	5	1	1
7	3	1	1	6	1	1	3	2	1
2	11	9	5	2	1	4	1	1	3
1	6	1	7	1	5	1	2	6	1
1	4	1	1	2	1	1	1	1	7

Design S9020 / Colorful Granny Pillow

Chart A



Stitch Key:

- ⊙ = Adjustable ring
- = 1 chain
- ◀ = 1 slip stitch
- = 1 single crochet
- † = 1 double crochet
- ⊕ = 2 double crochet cluster

When the symbols are grouped together at the bottom, then work these stitches together into the designated space.

Chart B

