

Design S9019 / Crochet Bag



Size: 14 x 14"/35 x 33 cm (without handles)

Materials: Schachenmayr Catania,
 300 g in marigold color #00383.
 1 Milward crochet hook size US D-3 (3 mm),
 Blunt yarn needle

Base of Bag: Follow Chart 1 in rounds.

Main Pattern: Follow Chart 2 in rounds. Multiple of 4 stitches.

Rep rounds 1 - 4.

Bag Handle: Follow Chart 3 in rows.

Gauge: 25 stitches and 14 rows = 4 x 4"/10 x 10 cm, in Main Pattern.

INSTRUCTIONS

Base: Chain 72 plus 3 which counts as the 1st double crochet (dc), then work Chart 1 as follows: For the 1st round, work 2 dc in 4th ch from hook, work dc in next 70 ch (7-st repeat worked 10 times), work 7 dc in last ch (for corner), working along other side of foundation ch, work dc in 70 ch (7-st repeat worked 10 times), work 4 dc in ch with beginning 2 dc (for corner), join round with slip stitch to top of beginning ch-3. Work rnds 2 and 3 of Chart 1.

Bag: Work in Main Pattern following Chart 2. On the 1st round, work 1 single crochet (sc) in each dc of previous round = 176 stitches. Rep rounds 1 - 4 for 10 times and rounds 1 and 2 once more. Fasten off.

Handle: Work Chart 3.

NOTE: The bag handles are worked along the sides of the bag then sewn together later.

Skip the center 30 stitches on both the front and back of the bag. For the left handle, join yarn to the 60th stitch of the Front (counting from right to left) and work Chart 3 over 58 stitches, working the 4-st rep 14 times. Repeat rows 1 - 8 for 5 times = 40 rows. There are now 19 stitches.

Repeat rows 41 - 44 for 4 times = 15½"/39 cm. Fasten off.

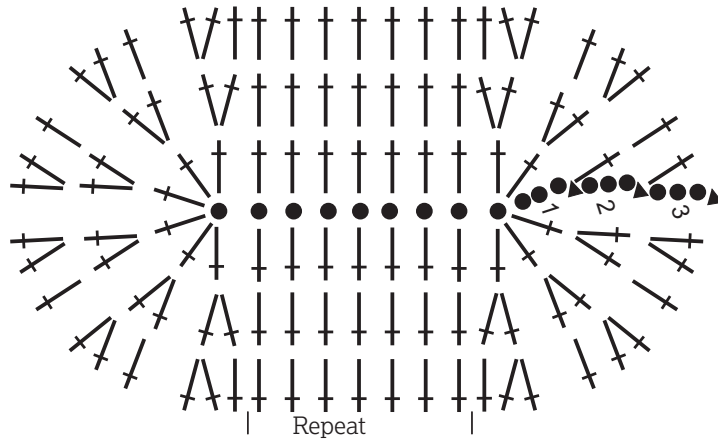
Work the second handle on the opposite side.

Finishing

Sew in all ends. Join the open ends of the handles with overcast stitches. Along the outer edges of the handle, work picot edge as follows: * 1 sc, 1 picot (chain 3, work 1 sc in first chain), skip 2 stitches; repeat from * around.

Design S9019 / Crochet Bag

Chart 1:



Stitch Key:

- = 1 chain
- ◄ = 1 slip stitch
- ▮ = 1 single crochet
- ↑ = 1 double crochet
- ⊕ = 3 double crochet worked together in one space.
- ⊔ = 2 double crochet worked together in one space.

When symbols are grouped together at the bottom, then work these stitches into the designated space.

The gray highlighted areas represent the last row of the previous round or row.

Chart 2:

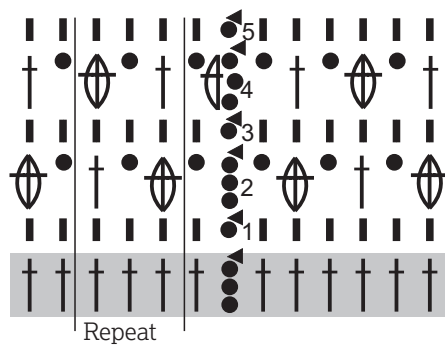


Chart 3:

