

Design S9013, Crochet Pullover in Wave Pattern



Sizes: XS (S/M, M/L, XL)

Instructions are for smallest size with the larger sizes in parentheses. If there is only one number, it applies to all sizes.

Materials:

Schachenmayr Catania,
450 (500, 550, 600) g blue iris #00384,
1 Milward crochet hook size US D-3 (3 mm),
Blunt yarn needle.

Wave Pattern: Follow the chart working back and forth in rows. Pattern is a multiple of 14 sts + 2. Work rows 1 - 10 once, then repeat rows 5 - 10.

Gauge: 21 stitches and 8 rows = 4 x 4"/10 x 10 cm, in Wave Pat.

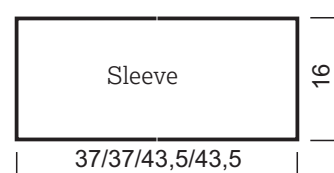
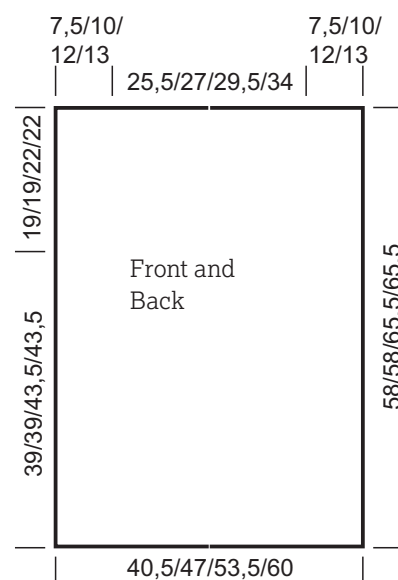
INSTRUCTIONS

Back: Chain 86 (100, 114, 128) plus 4 for turning and work in Wave Pat for 15½ (15½, 17, 17)"/39 (39, 43.5, 43.5) cm. Place a marker each side of last row to mark beginning of the armhole. Cont in pat until piece measures 23 (23, 25¾, 25¾)"/58 (58, 65.5, 65.5) cm = 46, 46, 52, 52 rows from beginning. Fasten off.

Front: Work same as Back.

Sleeves: Chain 71 (71, 85, 85) plus 4 for turning and work in Wave Pat for 6¾"/16 cm = 12 rows. Fasten off.

Finishing: Sew first and last 3 (4, 4¾, 5)"/7.5 (10, 12, 13) cm of front and back together for shoulder seams. With center of top of sleeve at shoulder seams, sew sleeves to front and back between armhole markers. Sew side and sleeve seams.

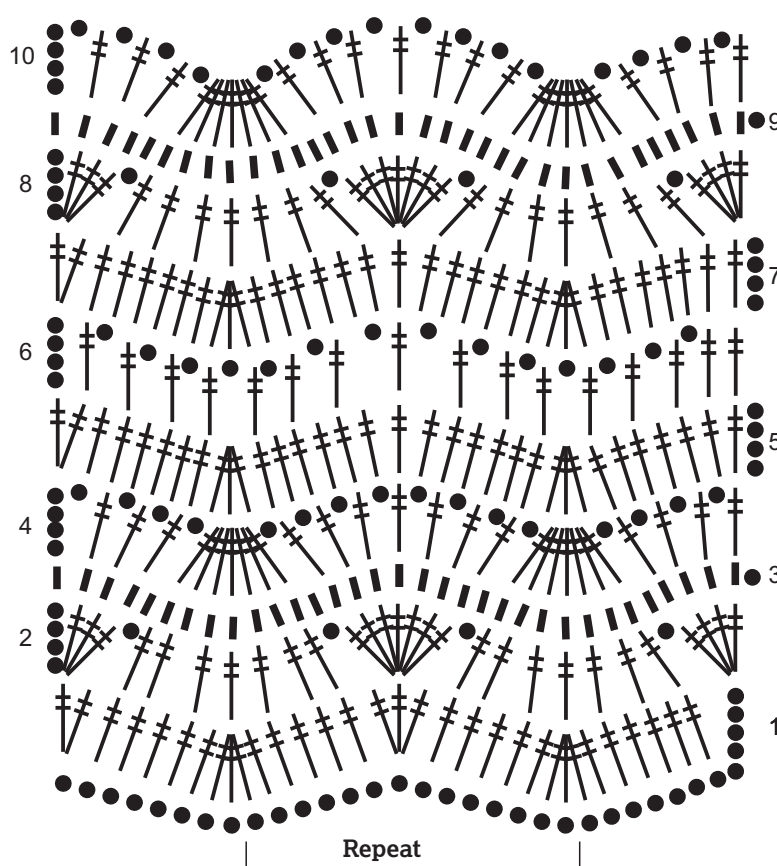


Design S9013, Crochet Pullover in Wave Pattern

Measurement Table for the Pullover

Sizes	XS	S/M	M/L	XL
Front and Back				
Width at lower edge (in)	16	18½	21	23½
Length to armhole (in)	15½	15½	17	17
Armhole depth (in)	7½	7½	8½	8½
Neck width (in)	10	10½	11½	13½
Shoulder width (in)	3	4	4¾	5
Total length (in)	23	23	25¾	25¾
Sleeve				
Width (in)	14½	14½	17	17
Total length (in)	6¾	6¾	6¾	6¾

Chart



Stitch Key:

- = 1 chain
- = 1 single crochet
- † = 1 treble crochet

When stitches are grouped tog at the top, work these stitches tog.

When stitches are grouped tog at the bottom, work these stitches into one space.