

# Design S9015 / Crochet Striped Top



**Sizes:** XS (S, M, L, XL)

Instructions are for smallest size with the larger sizes in parentheses. If there is only one number, it applies to all sizes.

**Materials:**

**Schachenmayr Catania**, 100 g each leaf green #00389 and dark olive #00387, 50 g each blue iris #00384 and delft blue #00261.

1 Milward crochet hook size US D-3 (3 mm),  
Blunt yarn needle.

**Lace Pattern:** Follow the chart. Chain a multiple of 2 sts + 1 + 1 for turning. Repeat rows 1 + 2, working in Stripe Pattern for Back and Front.

**Stripe Pattern for Back:** \* 4 rows dark olive, 1 row leaf green, 4 rows delft blue; repeat from \* 2 times; then 4 rows dark olive, 1 row leaf green, 3 rows dark olive; \*\* 2 rows leaf green, 1 row dark olive, 2 rows leaf green, 1 row delft blue; rep from \*\* 5 (5, 5, 6, 6) times, then work 2 rows leaf green, 1 row delft blue, 3 rows leaf green.

**Stripe Pattern for Front:** \* 4 rows dark olive, 1 row leaf green, 4 rows delft blue; repeat from \* 2 times; then 4 rows dark olive, 1 row leaf green, 4 rows dark olive. Continue in leaf green.

**Gauge:** 22.5 stitches and 11 rows = 4 x 4"/10 x 10 cm, in Lace Pattern.

**INSTRUCTIONS**

**Back:** With blue iris chain 91 (101, 111, 121, 131) and for the border work 3 rows = 2 cm in single crochet. Continue in Lace Pattern and Stripe Pattern for Back for 39 (39, 39, 45, 45) rows = 13¾ (13¾, 13¾, 15¾, 15¾)"/35 (35, 35, 40, 40) cm. For the armhole shaping, leave 3 stitches unworked each side once, 2 stitches 3 times and dec 1 st each side every row 3 times = 67 (77, 87, 97, 107) stitches.

Work even until piece measures 55 (55, 55, 61, 61) rows = 20 (20, 20, 22, 22)"/51 (51, 51, 56, 56) cm above border. For the neck shaping, leave the center 17 (17, 17, 27, 27) stitches unworked and working both sides at once with separate balls of yarn, leave sts unworked at each neck edge every row as follows: 4 stitches 2 times, 3 stitches 2 times and 2 stitches 2 times = 7 (12, 17, 17, 22) sts each side.

When piece measures 66 (66, 66, 72, 72) rows = 23 (23, 23, 25, 25)"/58 (58, 58, 63, 63) cm above border, fasten off.

**Front:** Work same as Back, but working Stripe Pat for Front, and work neck shaping when piece measures 45 (45, 45, 50, 50) rows = 16 1/2 (16 1/2, 16 1/2, 18 1/2, 18/12)"/42 (42, 42, 47, 47) cm from beginning, as follows: Leave center 11 (11, 11, 21, 21) stitches unworked, and working both sides at once with separate balls of yarn, leave sts unworked at each neck edge every row as follows: 4 stitches 2 times, 3 stitches once, 2 stitches once and dec 1 st every row 7 times, then every 2nd row 1 st once = 7 (12, 17, 17, 22) sts each side.

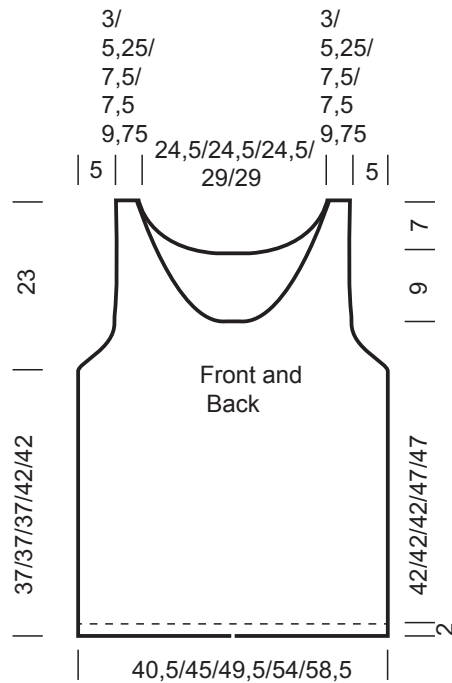
When same length as Back, fasten off.

**Finishing:** Sew shoulder and side seams. With blue iris, work 5 rows single crochet around neck edge and armhole edge.

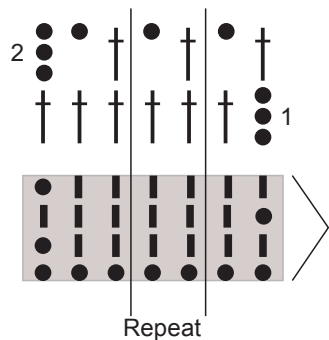
# Design S9015 / Crochet Striped Top

Measurement Table for the Top

Sizes	XS	S	M	L	XL
<b>Back and Front</b>					
Width at lower edge (in)	16	17¾	19½	21¼	23
Border height (in)	¾	¾	¾	¾	¾
Length border to armhole (in)	13¾	13¾	13¾	15¾	15¾
Armhole depth (in)	9	9	9	9	9
Shoulder width (in)	1¼	2	3	3	4
Neck width (in)	9½	9½	9½	11½	11½
Neck depth <b>Back</b> (in)	2¾	2¾	2¾	2¾	2¾
Neck depth <b>Front</b> (in)	6¼	6¼	6¼	6¼	6¼
Total Length <b>Front and Back</b> (in)	23½	23½	23½	25½	25½



**Chart**



**Stitch Key:**

- = 1 chain
- = 1 single crochet
- ⋈ = 1 double crochet