

Design S9017 / Crocheted Espadrilles



Size: Woman's shoe size 8-9.

The front foot flap is the same for all sizes. For a smaller size work a shorter side piece with fewer rows, or a longer piece for a larger size with more rows.

Materials:

Schachenmayr Catania, 100 g in leaf green #00389.

1 Milward crochet hook size US D-3 (3 mm),

Yarn needle,

1 pair espadrille soles size 8-9 from PRYM (Art. 975103).

Fancy Pattern: Follow Chart 1. Work rows 1 - 12 once. Then along the straight foundation chain edge work rows 13 and 14 once.

Eyelet Pattern: Follow Chart 2. Rep rows 1 and 2, ending with a row 2.

Note: Crochet very tightly, in order to have a firm fabric. The side pieces should fit a bit tautly on the sole and should not be any longer than the sole.

Gauge: 28 stitches and 14.5 rows = 4 x 4"/10 x 10 cm.

INSTRUCTIONS

Flap: Chain 15 and work Chart 1. After the 12th row, fasten off. Work rows 13 and 14 along the straight foundation chain edge (gray section on the Chart).

NOTE: For a good fit the width of the flap can be adjusted on the 12th row by working slip sts to shorten and single crochet to make larger.

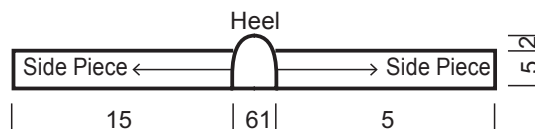
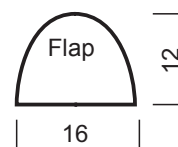
Heel and Side Piece: Begin same as the flap following rows 1 - 4 of the gray section of Chart 2. Then work the left side over the first 14 stitches following the 1st row of Chart 2 (above the gray section) = 6 filet squares.

Repeat rows 1 and 2 until 18 rows, have been worked from beginning. (For a smaller size, work fewer rows, for a larger size work more rows). Work the other side piece to correspond. Then along the top edge of both sides and heel, work 1 row single crochet and 1 row picot as follows: * 2 single crochet, 1 picot (chain 3, work 1 slip st in 1st chain); repeat from *.

Finishing: Sew the narrow edge of the side piece to the straight edge of the flap, so that the picot edge of the front lays to the front.

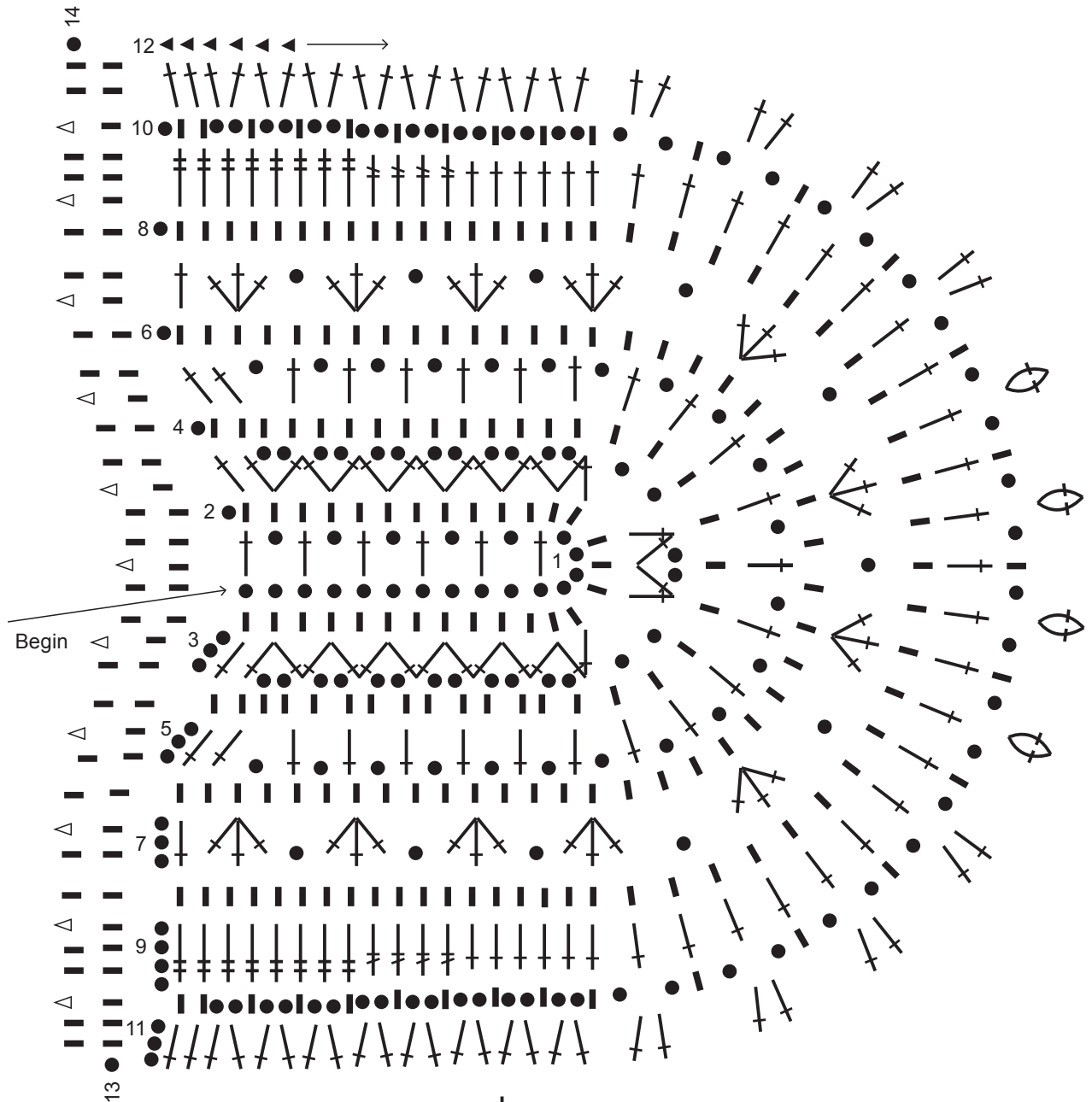
The sew the crochet piece with buttonhole st (see diagram) to the sole edge.

Here the size can also be adjusted, either sewing directly at the edge of lay it just above the sole.



Design S9017 / Crocheted Espadrilles

Chart 1



Stitch Key

- ◀ = 1 slip stitch
- = 1 chain
- = 1 single crochet
- ↑ = 1 double crochet
- ↑↑ = 1 half double crochet

↑ = 1 treble crochet

⊕ = work 2 double crochet together in one space

△... = Picot: chain 3, work 1 slip st in 1st chain

When stitches are grouped tog at the bottom, work these stitches into one space.

Design S9017 / Crocheted Espadrilles

Chart 2

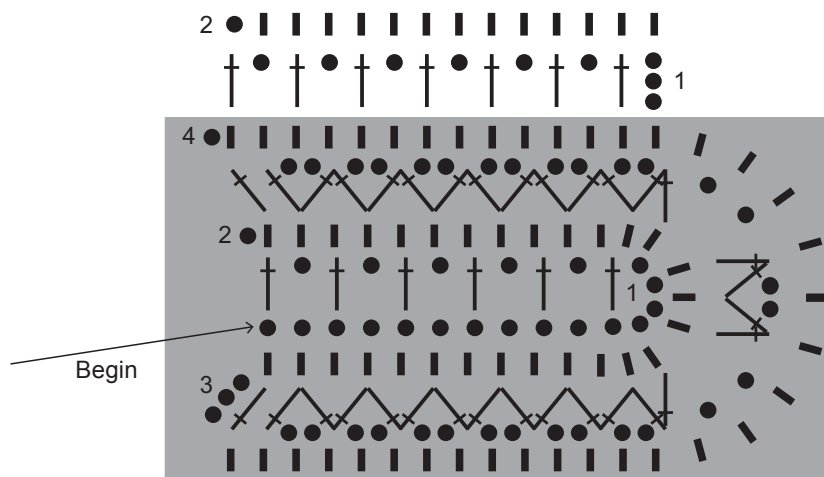


Diagram for buttonhole stitch:

