

Design S9018 / Striped Crochet Shirt



Sizes: XS (S, M, L, XL)

Instructions are for smallest size with larger sizes in parentheses. If there is only one number, it applies to all sizes.

Materials:

Schachenmayr Catania, 150 (150, 200, 250, 250) g leaf green #00389, 200 (200, 250, 300, 300) g linen #00248 and 100 (100, 150, 200, 200) g light pink #00246.

1 Milward crochet hook size US E-4 (3.5 mm),
Blunt yarn needle.

Foundation Single Crochet (fsc): This type of chain creates a more elastic edge than the traditional foundation chain.

Chain 2, insert hook in 2nd ch from hook, * pull up lp, yo, draw through 1 lp (counts as 1 foundation ch), yo, draw through 2 loops (1 fsc formed), insert hook in previous foundation ch; rep from * to desired number of fsc.

Lace Pattern: Follow the chart. Chain a multiple of 6 + 1 + 1 for turning.

Repeat rows 1 - 14, working Stripe Pattern as described below.

Stripe Pattern: Rows 1 - 3 with linen, rows 4 - 9 with leaf green, rows 10 - 12 with linen, rows 13 and 14 with light pink.

Gauge: 24 stitches and 12 rows = 4 x 4"/10 x 10 cm, in Lace Pattern.

Note: The Back is ¾" / 2 cm shorter than the Front. Therefore the pattern at the shoulders match perfectly.

INSTRUCTIONS

Back: With linen work 97 (109, 121, 133, 145) fsc as described above = 1st row of Lace Pattern. Continue in Lace and Stripe Patterns.

NOTE: If desired, instead of the foundation sc, you can use the normal chain and chain 98 (110, 122, 134, 146), then work sc in 2nd ch from hook and in each ch to end = 1st row of Lace and Stripe Patterns.

When piece measures 42 (42, 42, 56, 56) rows = 14 (14, 14, 18, 18)"/35 (35, 35, 46, 46) cm from beginning, increase for sleeves as follows: At end of last row chain 19, turn and work sc in 2nd ch from hook and in next 17 ch (for 18 extra sc), sc across 97 (109, 121, 133, 145) sc of Back, then at end of row, work 18 fsc = 133 (145, 157, 169, 181) stitches.

Work even in pat until piece measures 68 (68, 68, 82, 82) rows = 22 (22, 22, 26½, 26½)"/56 (56, 56, 67, 67) cm from beg, ending with a pat row 12. For neck shaping, leave center 59 stitches unworked, and work both sides with separate balls of yarn on rem 37 (43, 49, 55, 61) stitches each side for 2 rows = ¾" / 2 cm.

Fasten off.

Front: Work same as Back until piece measures 54 (54, 54, 68, 68) rows = 17¾ (17¾, 17¾, 22, 22)"/45 (45, 45, 56, 56) cm from beg.

For the neck shaping, leave center 59 stitches unworked and work both sides with separate balls of yarn on rem 37 (43, 49, 55, 61) stitches each side for 18 rows = 6" / 15 cm. Fasten off.

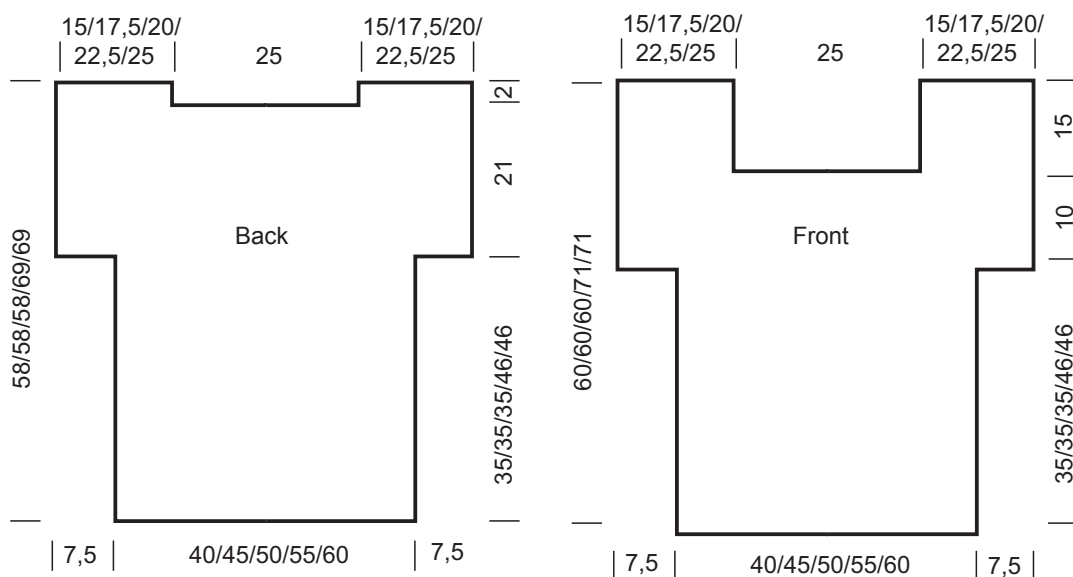
Finishing: Sew shoulder and side seams. Along vertical sides of neck edge, with linen work rows 1 - 3 of chart.

Work in same way around each armhole edge.

Design S9018 / Striped Crochet Shirt

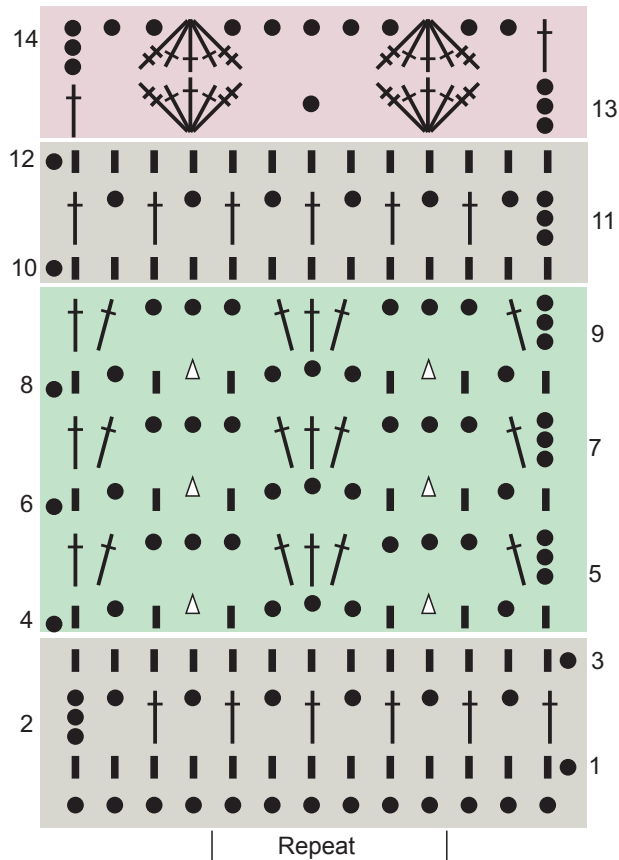
Measurement Table for the Pullover

Sizes	XS	S	M	L	XL
Back and Front					
Width at lower edge (in)	15¾	17¾	19½	21½	23½
Length to sleeve (in)	13¾	13¾	13¾	18	18
Sleeve Depth Back (in)	9	9	9	9	9
Sleeve Depth Front (in)	10	10	10	10	10
Shoulder width (in)	6	7	8	9	10
Neck width (in)	10	10	10	10	10
Neck depth, Back (in)	1¼	1¼	1¼	1¼	1¼
Neck depth, Front (in)	4¾	4¾	4¾	4¾	4¾
Total length, Back (in)	23	23	23	27	27
Total length, Front (in)	27½	27½	27½	32	32





Design S9018 / Striped Crochet Shirt

Chart



Stitch Key

- = 1 chain
- ▮ = 1 single crochet
- ⊥ = 1 double crochet
- △ = 1 Picot: chain 3, 1 sl st in 1st chain
-  = work 1 treble crochet, 3 double crochets, 1 treble crochet in one space
-  = work 1 treble crochet, 3 double crochets, 1 treble crochet together