

Design 5370, Sweater and Design 5372 Slipover



Size: to fit height 50/56 cm (0/3 months), 62/68 cm (3/6 months), 74/80 cm (9/12 months) and 86/92 cm 18/24 months).

Directions for the smaller size are before the stroke, with larger sizes behind. If there is only one figure, it applies to all sizes.

All measurements are in centimeters (cm). For approximate inch sizes simply multiply by 0.4.

Materials: yarn **Schachenmayr original, quality Catania.**

Sweater: 50(100/100/100) g each # 00115 red, # 00208 sun and # 00222 orchid, 50 g each # 00389 lime, # 00281 tangerine, # 00205 apple green, # 00124 navy and # 00106 white.

Accessories: 3 buttons.

Slipover: 50 g each # 00115 red, # 00208 canary, # 00222 orchid, # 00389 lime, # 00281 tangerine, # 00205 apple green, # 00124 navy and # 00106 white.

Size 1-4 [2.75-3.75 mm] needles, for the slipover same size double pointed needles, or size to obtain gauge, plus one blunt embroidery needle.

Stockinet stitch (st-st): K RS rows; PWS rows; in rounds K all sts.

Jacquard pattern A1 and A2: work in sts tin Jacquard technique follchart A. Work rows 1-6 once.

Jacquard pattern B1 and B2: work in st-st in Jacquard technique foll chart B. Work rows 1-2 once.

Jacquard pattern C1 and C2: work in stst in Jacquard technique foll chart C. Work rows 1-4 once.

Jacquard pattern D1 and D2: work in stst in jacquard technique foll chart D. Work rows 1-4 once.

Note the varying legends for each pattern!
Center each motif and cont patt to the sides, adjust rem sts. to fit, edge st.

Gauge: 25 sts. and 38 rows each to 4" [10 cm] on size 1-4 needles.

SWEATER

Pattern sequence for front and back:
work in st-st.

4(4/6/8) rows orchid

6 rows Jacquard patt A1

3(3/5/7) rows orchid

2 rows Jacquard patt B1

*9(11/13/15) rows navy

1 row edge st., then alt 1 st. canary and 1 st. tangerine, end with 1 st. canary, edge st.

1 row edge st., then alt 1 st. tangerine and

1 st. canary, end with 1 st. tangerine, edge st.

4(4/4/6) rows canary

4 rows Jacquard patt C1

4(4/4/6) rows canary

2(4/4/4) rows red

4 rows Jacquard patt D1

3(3/3/5) rows signal red

2 rows Jacquard patt B2

3(3/5/7) rows orchid

6 rows Jacquard patt A2

4(4/6/8) rows orchid *

12(12/14/16) rows apple green

1 row edge st., then alt 1 st. red and

1 st. canary, end with 1 st. red, edge st.

1 row edge st., then alt 1 st. canary and 1 st.

red, end with 1 st. canary, edge st.

4(4/4/6) rows canary

4 rows Jacquard patt C2

4 rows canary **,

2(4/4/4) rows red

4 rows Jacquard patt D2,

= 94(100/112/132) rows. Cont in red.

Design 5370, Sweater and Design 5372 Slipover

Pattern sequence for sleeves: work in st-st foll patt sequence for front and back from * to * = 47(51/57/69) rows, then cont in apple green.



METHOD

Back: cast on 67(77/87/97) sts. in apple green and K 1 WS row, then cont in patt sequence as for front and back. When work measures 26(27.5/31/36) cm, or after 99(105/119/137) rows, bind off the first 46(52/58/63) sts., and cont even for another 2 cm = 7 rows st-st over the last 21(25/29/34) sts. at left side edge for underlap in red, then work 1 row alt K1, P1, then bind off all sts.

Front: proceed as for back except for neck. When work measures 23(24.5/28/33) cm, after 87/93/107/125) rows, bind off 11(13/15/15) sts. at center for neck and finish each side sep. At neck edge bind off on every 2nd row 3 sts. once and 2 sts. once and 1 st. twice. When work measures 25(26.5/30/35) cm, or 8 rows from start of neck shaping, work 3 buttonholes in right shoulder as foll: from right side edge work 5(5/5/6) in patt, bind off 2, 4(6/8/10) in patt, bind off 2, 4(6/8/10) in patt, bind off 2, work rem sts. in patt. On foll row cast on 2 over those bound off. Then work another 2 rows alt K1, P1. When work measures 26(27.5/31/36) cm altog, bind off rem 21(25/29/34) sts. for shoulders.

Sleeves (both alike): cast on 33(37/45/45) sts. in apple green and K 1 WS row, then on foll RS row work edge st., then alt K3 navy and K1 lime, edge st. Cont in st-st for 47(51/57/69) rows patt sequence for sleeves, then in apple green. At the same time inc for sleeve shaping at each end 1 st. on every 4th row 12 times (1 st. on every 4th row 13 times and 1 st. on every 2nd row twice/1 st. on every 4th row 16 times/1 st. on every 4th row 15 times and 1 st. on every 2nd row 6 times) = 57(67/77/87) sts.

When work measures 14(16/18/20) cm, or after 53(61/69/77) rows bind off all sts.

Finishing: onto the navy panels embroider large white flowers with lazy daisy stitch with 2 small straight sts. for the centers in canary; embroider small flowers alike onto apple green panels, but working flower centers in tange-rine; embroider cross stitch onto Jacquard patt C. Block pieces to measurements, cover with a damp cloth and allow to dry. Close right shoulder seam. Pick up 60(70/80/80) sts. around neck edge, K 2 rows, then bind off all sts. Sew sleeves in position, bringing underlap of over left shoulder under left shoulder of front, close sleeve and side seams. Sew on buttons.

METHOD, Slipover

Pattern sequence: work in st-st in patt sequence at front and back of sweater to ** = 88(92/104/124) rows, then cont in red.

Back: cast on 63(73/83/93) sts. apple green and K 1 WS row, then cont in patt sequence. When work measures 13.5(14/15/18.5) cm, or after 51(53/57/69) rows, bind off for armholes at each end 3 sts. once, then on every 2nd row 2 sts. once and 1 st. twice = 49(59/69/79) sts.

When work measures 22.5(25/28/33.5) cm, or after 85(95/107/127) rows, bind off for shoulder shaping at each end 3(5/5/7) sts. once, then 3(4/5/6) sts. on every 2nd row 3 times.

At the same time, tog with 1st dec, bind off 15(15/19/19) sts. at center for neck and finish each side sep. At neck edge bind off on every 2nd row 3 sts. once and 2 sts. once. Total height of work 24(26.5/29.5/35) cm.

Front: proceed as for back except for neck. When work measures 13.5(14/ 15/18.5) cm, tog with start of armhole shaping, slip center st. onto a holder for neck and cont each side sep. At

Design 5370, Sweater and Design 5372 Slipover

neck edge bind off on every 2nd row 1 st. alt on every 2nd and 4th row 12 times (1 st. on every 2nd row twice and 1 st. on every 4th row 10 times/1 st. on every 2nd row twice and 1 st. on every 4th row 12 times/1 st. on every 4th row 14 times). When work measures 22.5(25/28/33.5) cm bind off 12(17/20/25) sts. at each end for shoulders as for back.

Total height of work 24(26.5/29.5/35) cm.

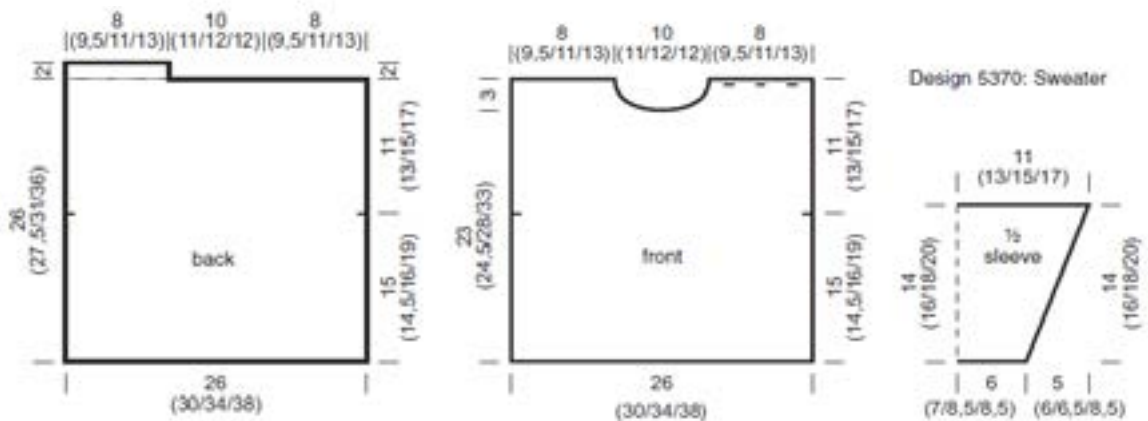
Finishing: embroider panels as for sweater, but working flower centers in orchid onto flowers

on apple green stripes.

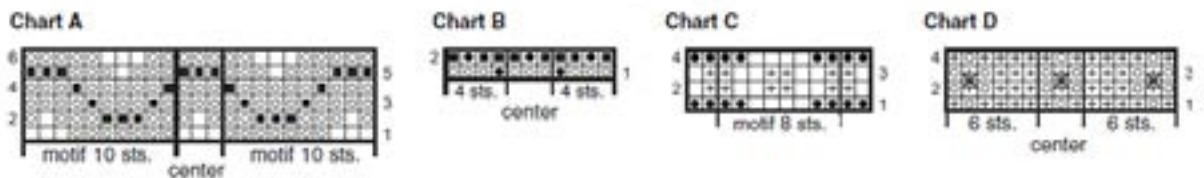
Block pieces to measurements, cover with a damp cloth and allow to dry. Join shoulder and side seams. Pick up 54(64/74/84) sts. apple green around each armhole edge with the doublepointed needles and K 4 rounds, then bind off all sts., allowing bands to roll up.

For neck band pick up st. at center front and 75(87/99/109) sts. apple green and work over 76(88/100/110) sts. K 4 rounds. On every round slip center st. knitwise, K1, pass slipped st. over. Then bind off all sts.

Measurements:



Charts:



Legends:

Legend

Chart A:

Jacquard pattern A1:

- = 1 st. tangerine
- ▣ = 1 st. orchid
- = 1 st. red

Jacquard pattern A2:

- = 1 st. canary
- ▣ = 1 st. orchid
- = 1 st. navy

Chart B:

Jacquard pattern B1:

- = 1 st. lime
- ▣ = 1 st. navy
- ▣ = 1 st. orchid

Jacquard pattern B2:

- = 1 st. lime
- ▣ = 1 st. orchid
- ▣ = 1 st. red

Chart C:

Jacquard pattern C1:

- = 1 st. canary
- = 1 st. lime
- ▣ = 1 st. red

Jacquard pattern C2:

- = 1 st. canary
- = 1 st. lime
- ▣ = 1 st. navy

Chart D:

Jacquard pattern D1:

- ▣ = 1 st. red
- ▣ = 1 st. orchid
- X = 1 cross stitch tangerine

Jacquard pattern D2:

- ▣ = 1 st. red
- ▣ = 1 st. tangerine
- X = 1 cross stitch orchid